

EPLAN

efficient engineering.

Removing the Borders between Mechanical and Electrical Engineering: EPLAN PTC Windchill Integration.

PROCESS CONSULTING

ENGINEERING SOFTWARE

IMPLEMENTATION

GLOBAL SUPPORT



FRIEDHELM LOH GROUP

EPLAN

efficient engineering.

讓我介紹

May I introduce

Darf ich vorstellen

Puedo introducir

Mag ik u voorstellen

"EPLAN"

Puis-je vous présenter

Posso presentarle

Kan jeg presentere

PROCESS CONSULTING

ENGINEERING SOFTWARE

IMPLEMENTATION

GLOBAL SUPPORT










FRIEDHELM LOH GROUP

PLM Competence Center / Arnd Paulfeuerborn

EPLAN is part of a successful international group


Friedhelm Loh Group

 <p>Rittal – the system. Faster – better – everywhere.</p> <p>Control cabinets, power distribution, air conditioning, IT infrastructure and also software and service from the global market</p>	 <p>EPLAN – efficient engineering.</p> <p>EPLAN Software & Service develops CAE solutions and advises companies in the optimisation of their engineering processes.</p>
 <p>Stahlo – we supply steel fresh from the conveyor belt.</p> <p>High-output steel service from one of the largest plant-independent steel service centres in Germany.</p>	 <p>Kiesling – we automate the panel building.</p> <p>Kiesling Maschinentechnik is the specialist for automation solutions in switchgear engineering.</p>
 <p>LKH – we make more from plastic.</p> <p>Innovative product solutions made from plastic, ranging from project management up to component and process validation.</p>	 <p>Loh Services – intelligent services for a strong Group.</p> <p>Loh Services bundles central company services for the Friedhelm Loh Group – from controlling to IT.</p>
 <p>Cideon – efficient engineering.</p> <p>Leading Autodesk Platinum Partner, experts in SAP interface development and successful engineering service provider.</p>	



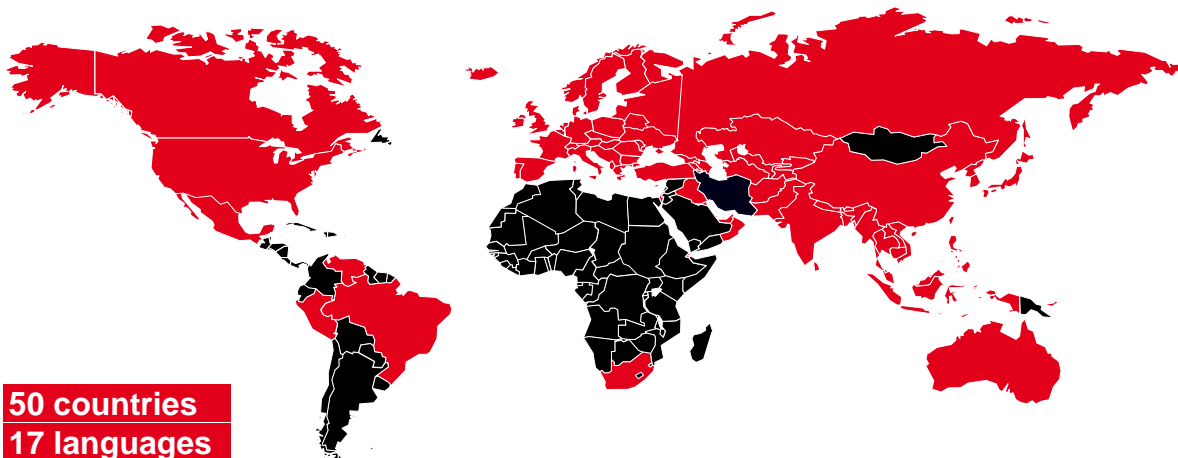
For more than 30 years: solutions for efficient engineering

EPLAN facts

Continuity	Investment security	
<ul style="list-style-type: none"> ▪ Successfully established since 1984 ▪ HQ in Monheim am Rhein, Germany ▪ Top Employer since 2009 (Top Employer Institute) 	<ul style="list-style-type: none"> ▪ Together with the Friedhelm Loh Group (F.L.G.), more than 11,500 employees worldwide ▪ F.L.G. owner-managed by Friedhelm Loh 	
		
International presence	Global success	Employees
<ul style="list-style-type: none"> ▪ Present in more than 50 countries ▪ EPLAN solutions in 17 languages ▪ Support of global standards 	<ul style="list-style-type: none"> ▪ 45,000 customers ▪ 110,000 installations (01/2015) 	<ul style="list-style-type: none"> ▪ More than 700 employees worldwide ▪ Expanding in all countries



Our customers operate all around the world – and so do we
EPLAN worldwide



50 countries
17 languages



FRIEDHELM LOH GROUP

PLM Competence Center / Arnd Paulfeuerborn

The right tools for efficient engineering
EPLAN engineering software



- EPLAN FEC One
- EPLAN FEC Prof.
- EPLAN Preplanning
- EPLAN Fluid
- EPLAN Electric P8
- EPLAN Pro Panel
- EPLAN Harness proD
- EPLAN Data Portal
- EPLAN Education

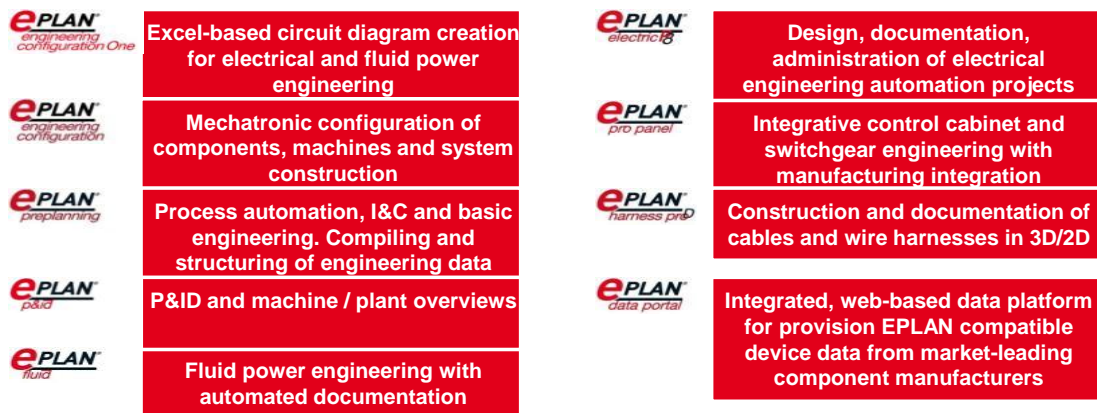


FRIEDHELM LOH GROUP

PLM Competence Center / Arnd Paulfeuerborn

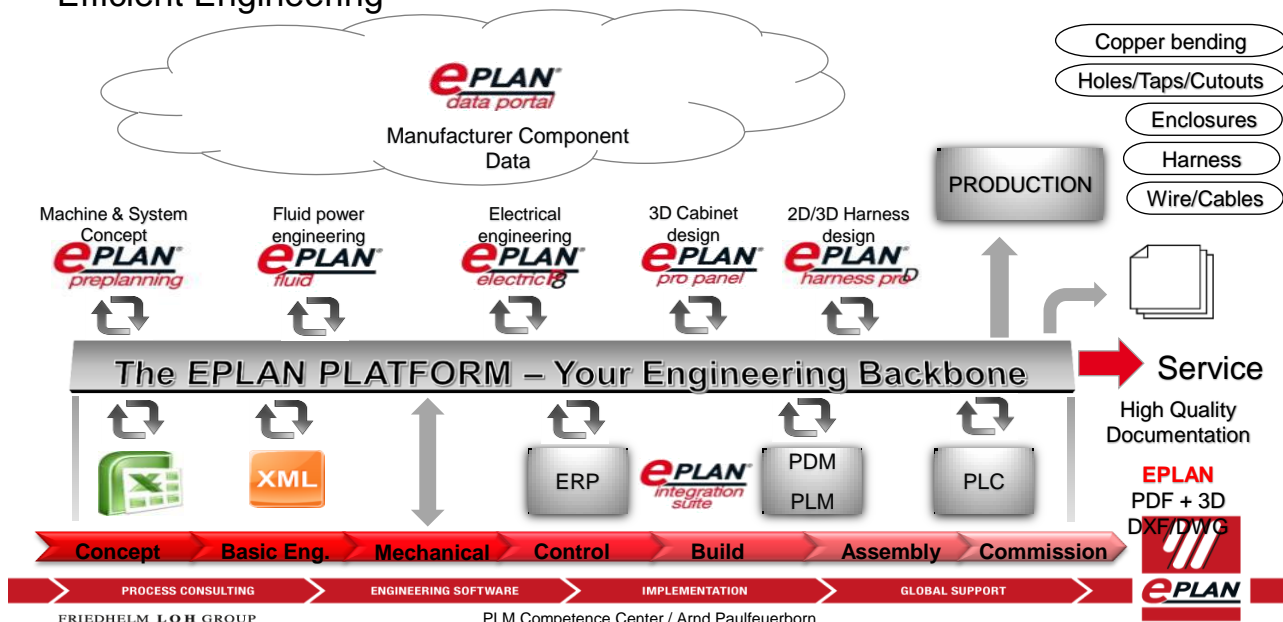
Best in class: you should expect no less

EPLAN engineering software – overview



The Engineering Process

Efficient Engineering



Global standard in electrical engineering

EPLAN Electric P8



» **EPLAN Electric P8: the new dimension in electrical engineering!**

Your e-effect – your benefits

- Uniquely powerful: variant technology
- Process-orientated, integrated and automated: transfer and electro technical preparation of data from upstream processes
- Flexible: thanks to graphical and object-orientation
- Fascinating: higher performance thanks to Office integration



Direct platform technology for communication

The raw material store in engineering

EPLAN Data Portal

» **Benefit from the design without media break – for higher project quality and reduced project time!**

Your e-effect – your benefits

- Online availability of current device data: 480,000 data entries, 17 languages, 72 manufacturers, 80 countries, 70,000 users (11/2014)
- Simple transfer of the data into the EPLAN documentation via "drag & drop"
- Rapid design without media break: minimising errors in engineering, material disposition and production



Service for component manufacturer: data creation, quality assurance, distribution, marketing



About 45,000 satisfied customers around the world

References

Automotive	Industry
Food & Beverage	Panel Building

Process Integration EPLAN Technology Partners

AMT
AMT interfaces to Kiestling, Komax and Steinhauer secure the transfer of engineering data through to fabrication. Drilling or milling can be prepared automatically.

ERP
Interfaces between M-CAD/E-CAD and ERP ensure smooth commercial operations into SAP, for instance in procurement, costing and parts-list management.

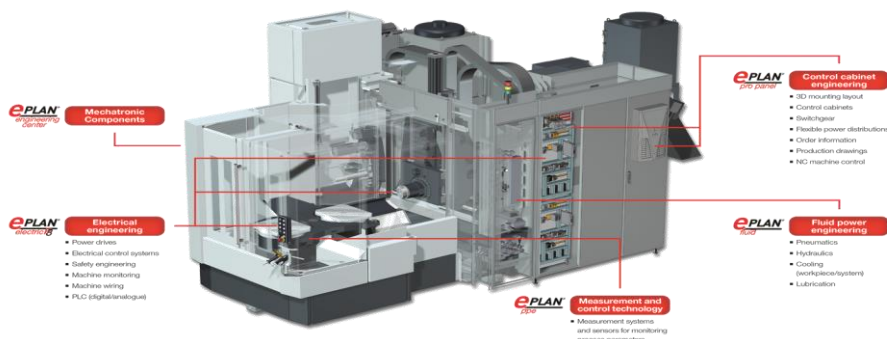
PDM/PLM
Interfaces to PDM/PLM systems such as Autodesk Vault and Siemens Teamcenter ensure the efficient management of product data alongside the processes of product creation.

PLC™
Data exchange between E-CAD and PLC programming systems – from Beckhoff B&R, Phoenix Contact, Rockwell Automation and Siemens, for example – saves time because it avoids having to input data twice.

Partners: Stierli-Bieger, KIESLING, komax, STEINHAUER ELEKTROMASCHINEN AG, Schleuniger, ABB, MITSUBISHI ELECTRIC, logi.cals, CoDeSys, BECKHOFF, Schneider Electric, Rockwell Automation, PHOENIX CONTACT, PRO ALPHA, SAP, ProCoS, SAP, agile, Autodesk Vault Professional, ENOVIA, TEAMCENTER, Windchill, SIEMENS.

Teamwork reduces complexity

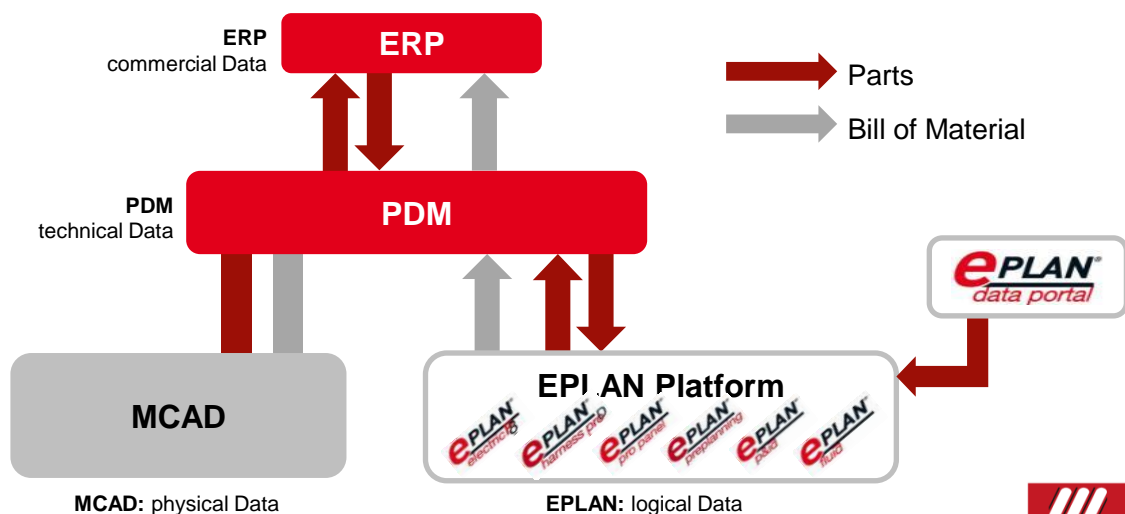
Closing the Gap



- Closing the gap between mechanical and electrical engineering by using PDM as established as the single source of truth

EPLAN ERP/PDM Integration Suite

Data flow of Parts and Bill of Material



EPLAN Windchill Integration

Reliable Partners for Reliable Solutions

- EPLAN is PTC Gold Partner
- EPLAN is owner of the Windchill Connector (IP ownership)
- Based on EPLAN ERP/PDM Integration Suite
- Developed with Inneo Solutions GmbH
- Supports EPLAN Electric P8 Platform from EPLAN 2.4
- Supports PTC Windchill PDMLink 10.2

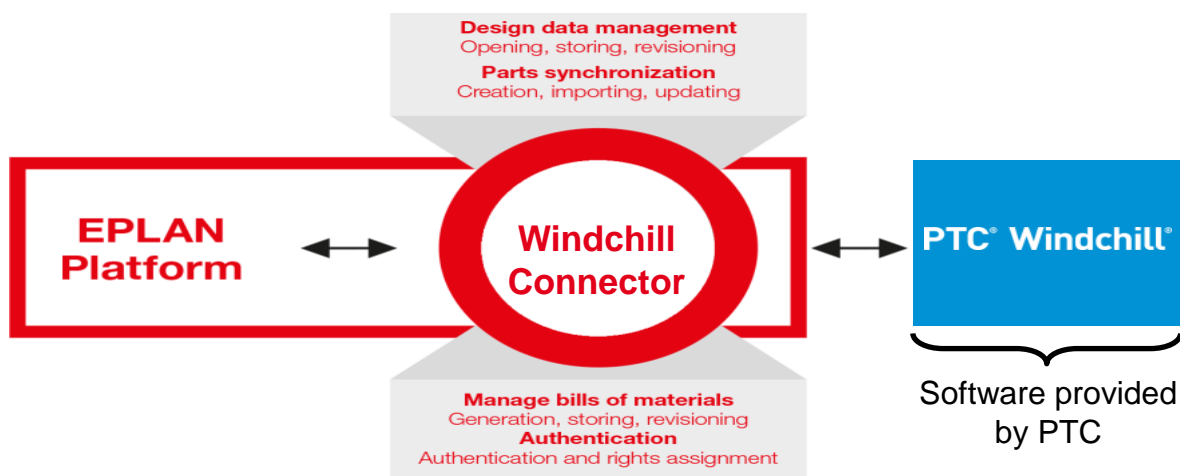
PTC®

INNEO
That's IT.



EPLAN – PTC Windchill Connector

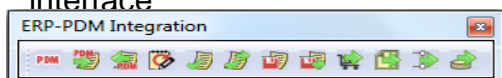
Windchill Interface based on EPLAN Integration Suite



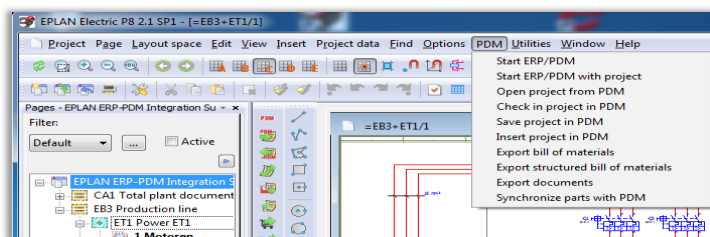
EPLAN Windchill Integration

Document Management embedded in EPLAN

- Direct access to EPLAN – Windchill integration from the EPLAN user interface



- Direct check-in to PTC Windchill



Documents in PTC Windchill
Time scheduling or on-demand



EPLAN Windchill Integration

Document Management embedded in Windchill

- Directly open or check-out of EPLAN projects from PTC Windchill
- Creation of new EPLAN projects based on templates in PTC Windchill
- Copy of existing EPLAN projects in PTC Windchill
- View EPLAN project PDF in Windchill Creo View

Use of PTC Windchill workflow and document management



EPLAN Windchill Integration

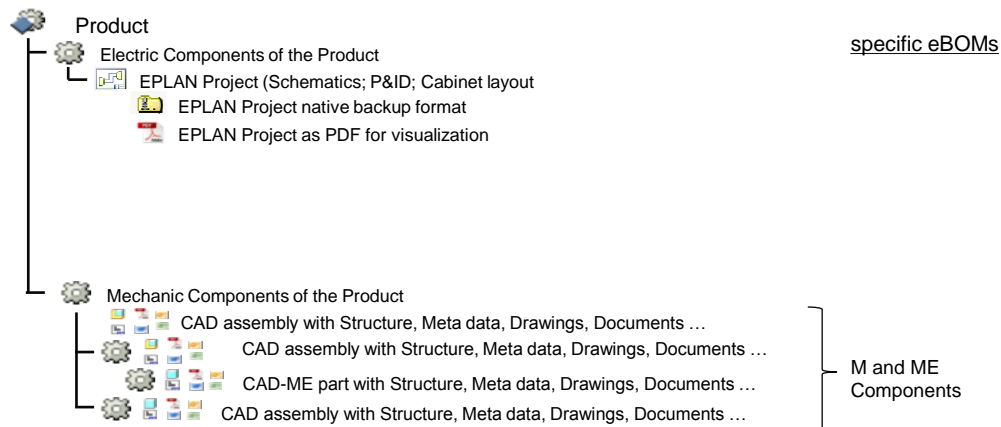
Catalogue and BOM Management

- Derive BOM from EPLAN design
- Merge of properties between EPLAN properties and WT parts
- Maintain EPLAN part meta data

EPLAN Windchill Integration

On the way towards a consolidated BOM

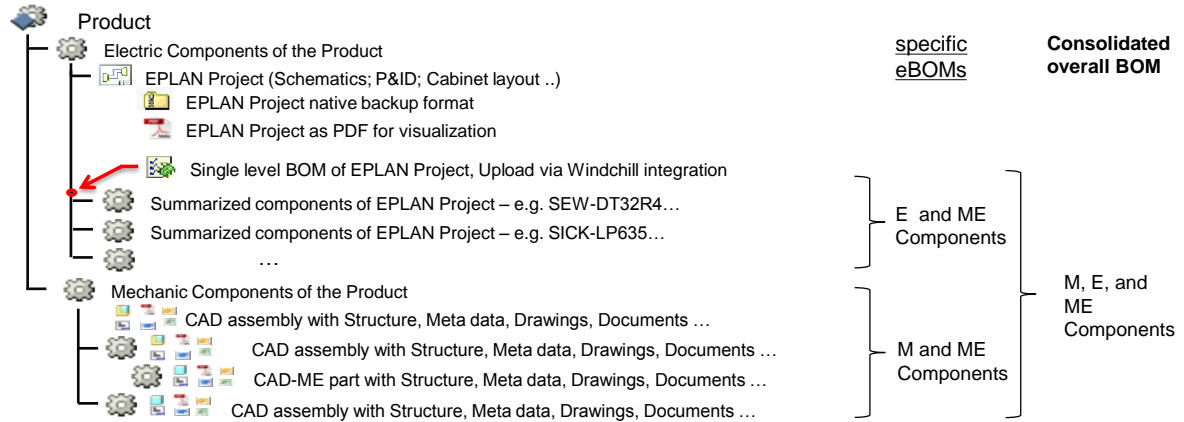
- Basic Data Management



EPLAN Windchill Integration

On the way towards a consolidated BOM

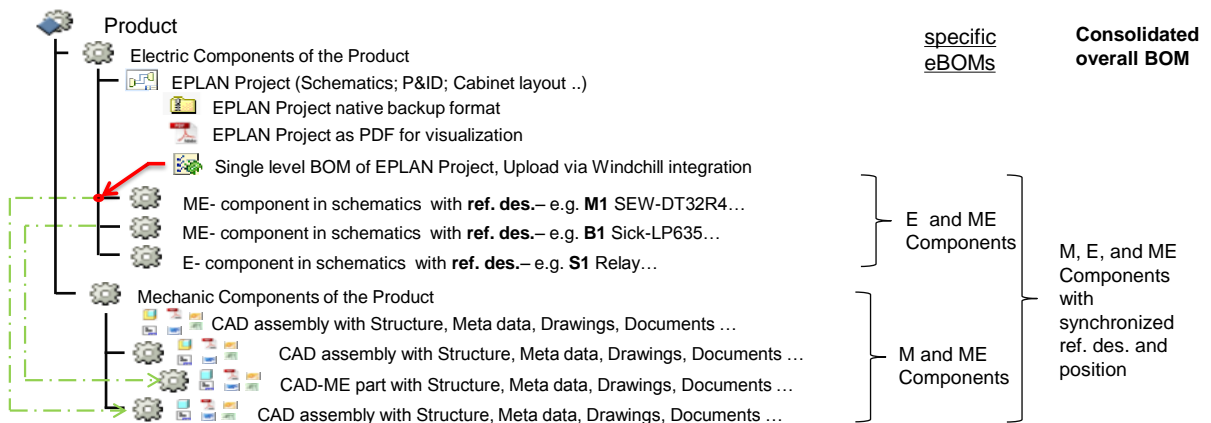
- Enhanced with BOM information



EPLAN Windchill Integration

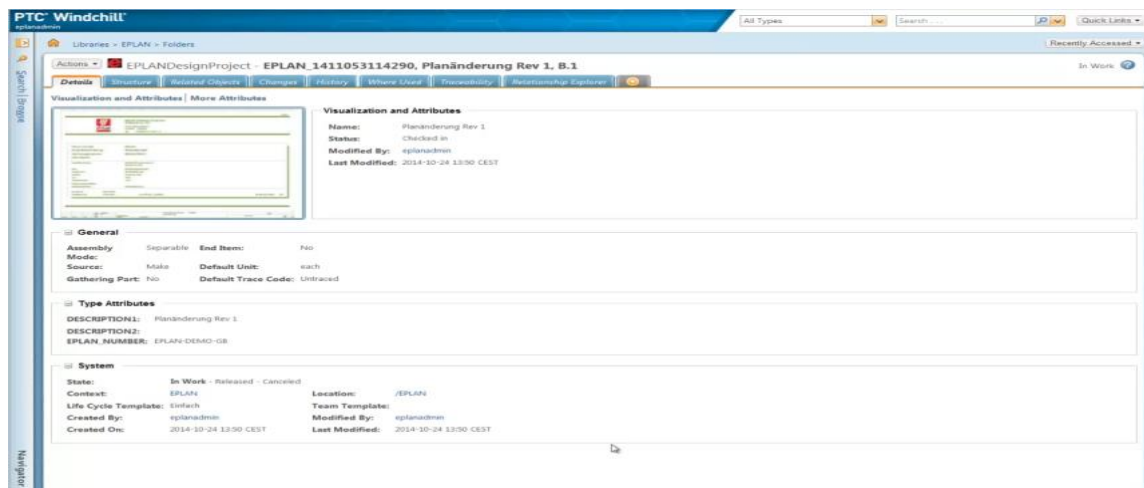
On the way towards a consolidated BOM

- Enhanced with BOM information and Reference Designator



EPLAN Windchill Integration

Video Presentation



EPLAN Windchill Integration

Questions

