

Why Classify Parts

PTC Live
Global

What's to Gain?

- **Organize Parts**
 - Groups parts into classes or types
 - Standardizes names, descriptions, spelling, abbreviations
 - Assign attributes for consistent part creation and management
 - Facilitates navigation through large volumes of data
- **Find & Reuse Parts**
 - Reduces part proliferation through effective attribute searches
 - Reduces duplication of parts, similar designs and drawings
- **Supports Part Standardization**
 - Promotes use of preferred parts and preferred suppliers
 - Use of preferred parts increases design reliability
- **Improve Efficiency and Cost Effectiveness**
 - Enables consolidation of parts and suppliers to leverage volume discounts
 - Avoids redundant design time, part setup and documentation
 - Helps identify/consolidate duplicates and correct inconsistencies
 - Reduces overall data volumes for management

3

Select the Right Team

PTC Live
Global

Development Core Team

- A group of **core** team members with broad-based product knowledge
- All areas of the business should be represented – Design, Purchasing, Sales, etc.
- System Admin to develop the schema in the software
- The team should have support and backing from top level management

Conversion Team

- Dependent on the accuracy of the legacy data.
 - ✓ If data is accurate or clearly defined on drawings, entry-level individuals may be used to populate the attribute fields
 - ✓ If the data is questionable, a more technically savvy individual is required

Governance Team

- Similar criteria as the Development Team
- Meets as required; periodically audits classifications – audits for accuracy / quality
- System Admin to maintain schema updates and edits

4

Schema Development

PTC Live
Global

Define Guidelines – Solar Turbines schema information

- **Number of major branches**
 - 28 top level
 - 148 sub level
- **Number of end nodes**
 - 1658 Note: somewhat dictated by the naming convention - only one node can be selected
- **Depth**
 - no more than 4 levels down - becomes a user issue
- **Number of parts managed**
 - 300,000 parts are currently classified out of one million+ parts in the system
 - Business rule: every new part created requires classification
- **Number of attributes per node**
 - Number varies from 1 to 23 - most attributes are String-type with a drop-down menu of values
 - Over 1100 unique attributes
- **Max attributes per node**
 - I don't believe there's a software limitation for number of attributes assigned
 - This becomes more of a user issue and what is a reasonable amount of data to enter

7

What We've Learned

PTC Live
Global

Pitfalls



- **Designing overly complex taxonomies and metadata strategies:**
 - Too deep or too wide – cumbersome navigation
 - Too many attributes assigned to leaf node
 - Too many attribute options
 - Too much variation within one node
- **Designing attributes to cover broad range of leaf nodes**
 - Too difficult to maintain
- **OOB software does not sync the views**

8

Motto: It must be right the first time

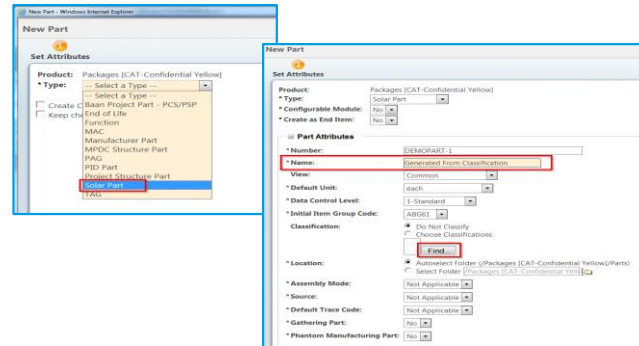
get it right



Take the time to design the schema accurately.

Once parts are linked it is difficult to make changes

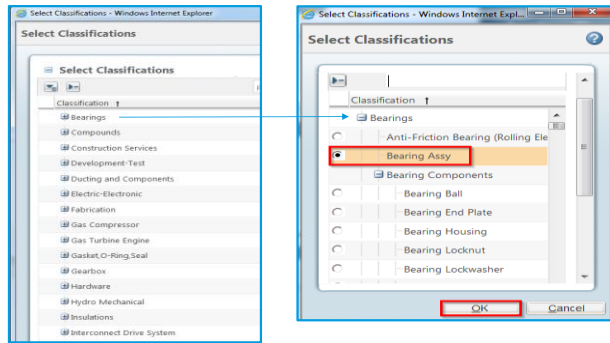
New Part Create



Auto Generate Part Name by Classification

PTC Live
Global

Select the Right Node

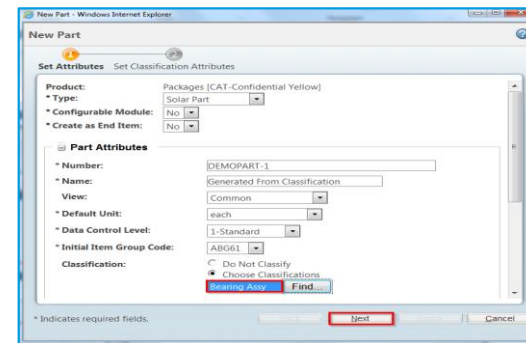


11

Auto Generate Part Name by Classification

PTC Live
Global

Bearing Assembly Node Assigned



12

Auto Generate Part Name by Classification

PTC Live
Global

Assign Attributes and Comply with Naming Rule

The 'New Part' dialog box is shown with the 'Set Classification Attributes' tab selected. The 'Naming Rule 30 Chars Max' field is highlighted with a red box and contains the rule: `BEARING ASSY,Port,Position,Load Direction,Fluid Film Bearing Type`. Other attributes include 'Electrical Certification' (ATEX Zone 1, 2, NEC Class I, Div 1), 'Fluid Film Bearing-Type' (SLEEVE), 'Load Direction' (RADIAL), 'Mechanical Certification' (CE Mark, US), 'Port' (DISCHARGE), 'Position' (OUTBD), 'Probe-Vibration' (NONE), and 'Size Options' (OVERSIZE). The 'Finish' button is highlighted with a red box.

13

Auto Generate Part Name by Classification

PTC Live
Global

Part Created with Part Name and Extended Part Name

The Windchill interface shows a part created with the name `DEMOPART-1 BEARING ASSY,DISCHARGE,OUTBD` and an extended description `BEARING ASSY,DISCHARGE,OUTBD RADIAL,SLEEVE`. The 'Details' tab is selected, showing attributes such as 'Data Control Level: 1-Standard', 'Initial Item Group Code: ABG61', 'Service Code: NSP', 'Service Code Description: Not Service Part for RSPL Creation', 'Solar Legacy Description', 'Solar Legacy Team', and 'Tag Designations'.

14

Auto Generate Part Name by Classification

PTC Live
Global

Part Created without Proper Classification cannot be created in ERP

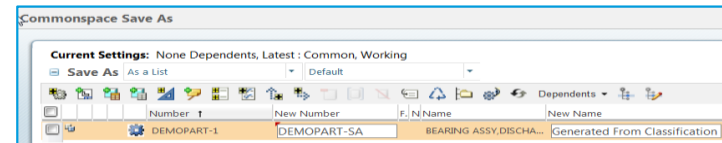


15

Auto Generate Part Name by Classification

PTC Live
Global

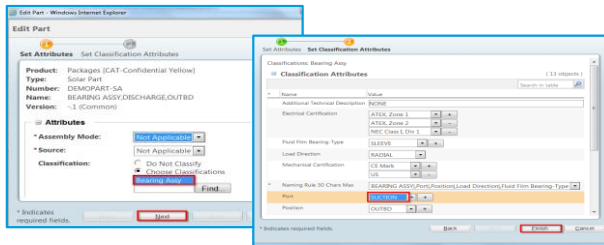
Save As Part from Existing Part – need to update attributes



16

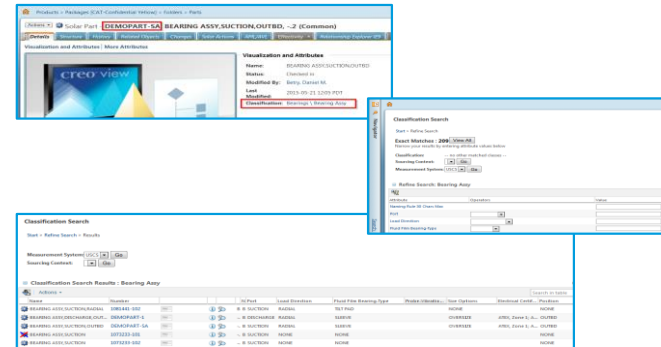
Auto Generate Part Name by Classification

Save As Part from Existing Part – need to update attributes



Auto Generate Part Name by Classification

Link to Classification Search – Customization

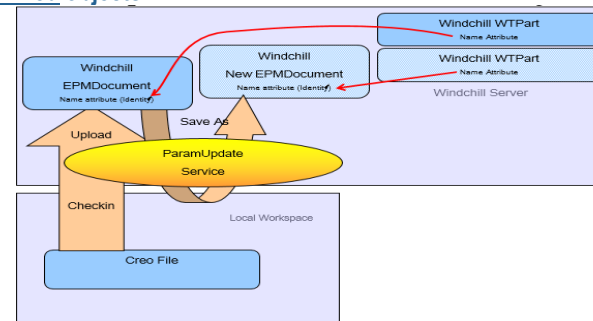


Updating non Master Attributes on All Part Views

- After a part is created in the common view, manufacturing and service views can be created
- The user should be able to re-classify parts and have the attribute data (IBA) updated on all part views that exist for the part
- Process:
 - User can only Checkout and Edit the Common View
 - User Changes Attributes
 - On check-in, Attributes are updated on Manufacturing and Service Views to match the common view

19

Populate CREO object names upon from PTC Windchill wtpart names for non-linked objects



20

Define Target Data Set

- Not all new part-types require classification
- Not all legacy parts require classification
 - Current demand
 - Inventory count
 - Product life
 - Maintenance & Repair
- Keep a life line for go-live – add generic node

- Your feedback is valuable
- Don't miss out on the chance to provide your feedback
- Gain a chance to win an instant prize!
- Complete your session evaluation now

PTC Live Global
liveglobal.ptc.com

PTC[®] PRODUCT & SERVICE ADVANTAGE