



PART 304 DFM Considerations During Design: Perspective Change from Reactive to Proactive

Presented by
Omar Santiago del Valle.
Mechanical Engineer EHCOE
Honeywell Aerospace

Nikhil Dalvi
Director, Products
Geometric Americas Inc



Agenda



-
- DFM Problem Statement
 - DFMPPro Overview
 - DFM Process Map
 - DFMPPro Deployment
 - Example Analysis
 - Q&A

DFM Problem Statement

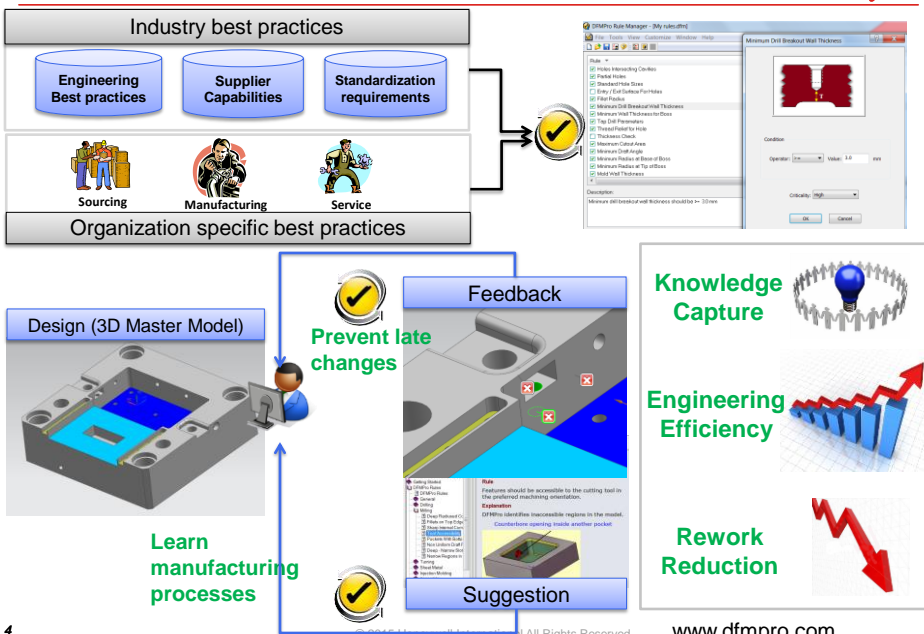
- Honeywell Aerospace E&T Cost Reduction
- Transition from Reactive to Proactive
- Several DFM analysis products evaluated
- DFMPPro selected using 6 Sigma Selection Tool



3

© 2015 Honeywell International All Rights Reserved

DFMPPro Overview

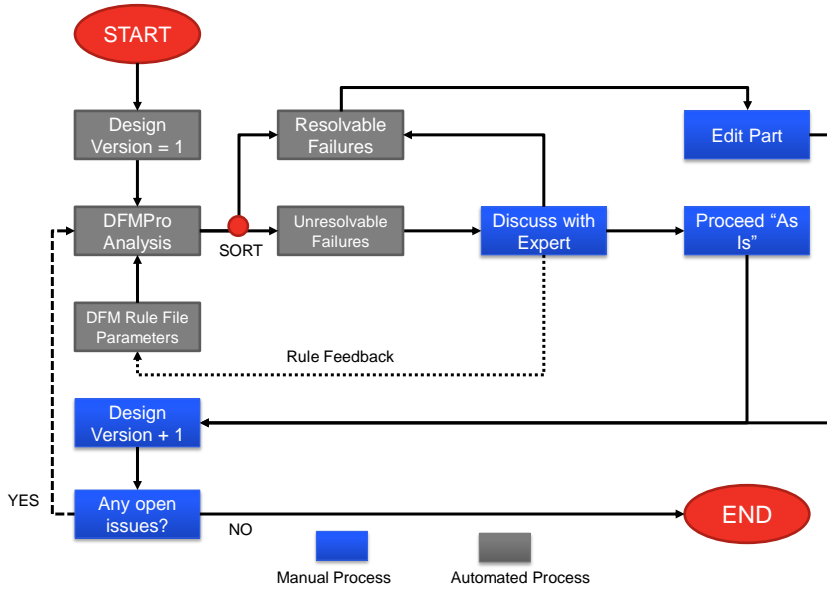


4

© 2015 Honeywell International All Rights Reserved

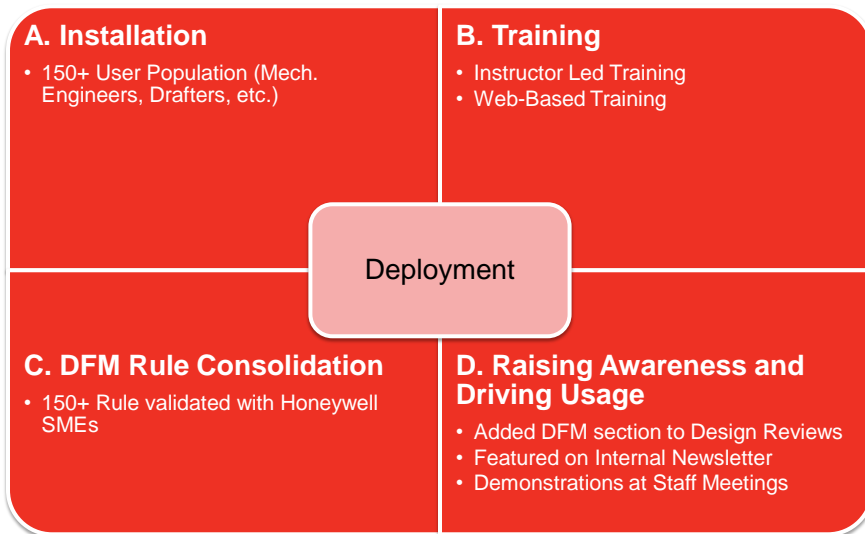
www.dfmpro.com

DFM Process Map



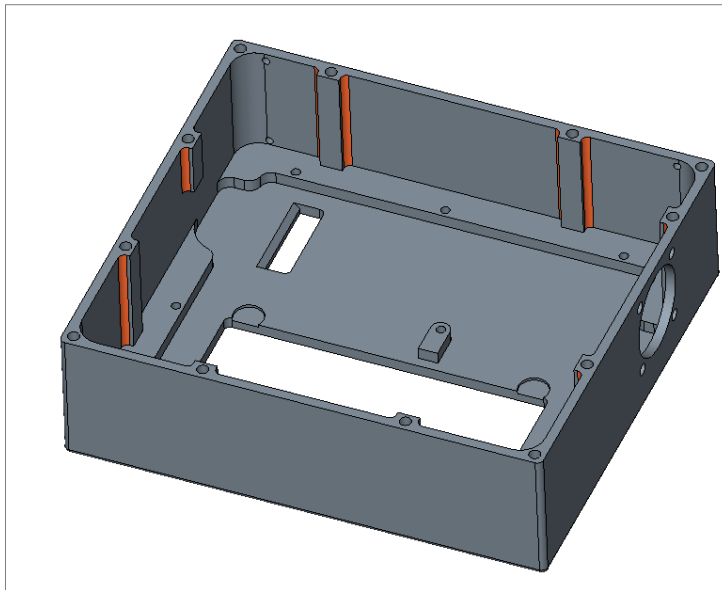
5

Tool Deployment



6

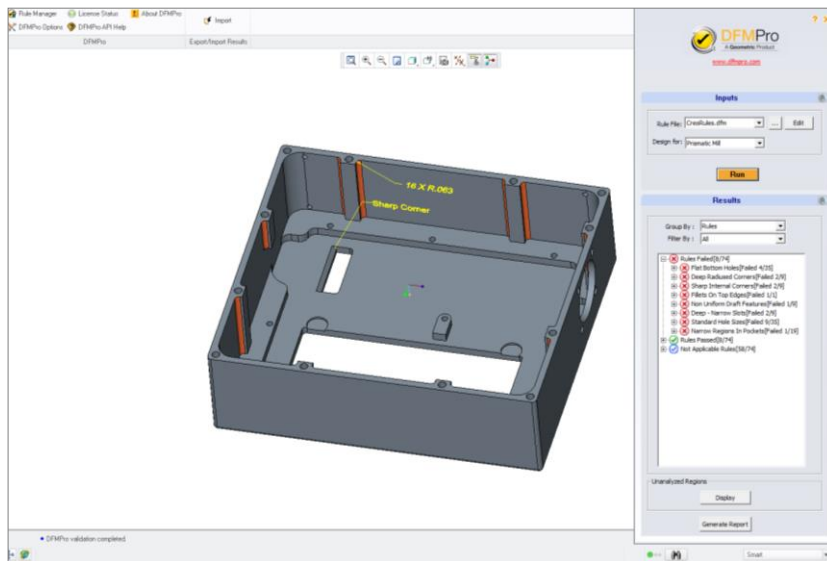
Example Part



7

© 2015 Honeywell International All Rights Reserved

DFMPro Analysis



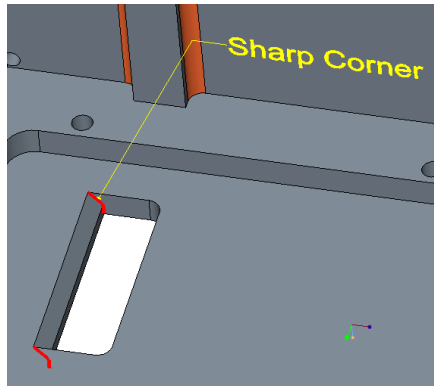
8

© 2015 Honeywell International All Rights Reserved

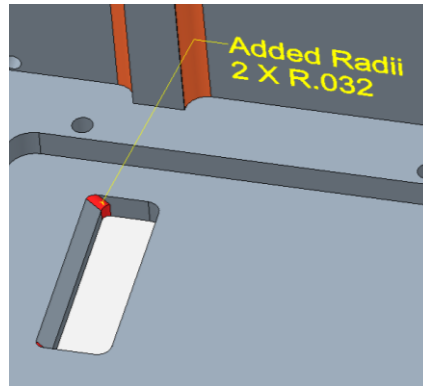
Sharp Internal Corner

Honeywell

BEFORE



AFTER



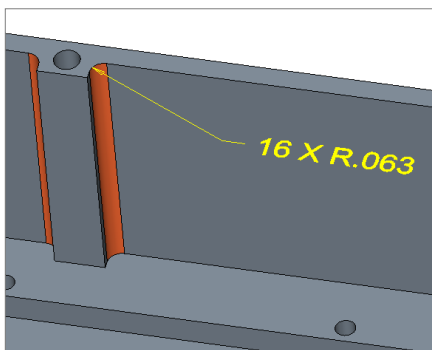
9

© 2015 Honeywell International All Rights Reserved

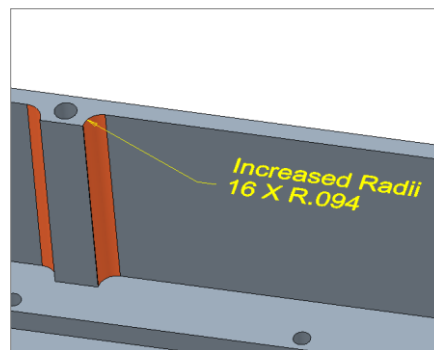
Deep Radius

Honeywell

BEFORE



AFTER



10

© 2015 Honeywell International All Rights Reserved

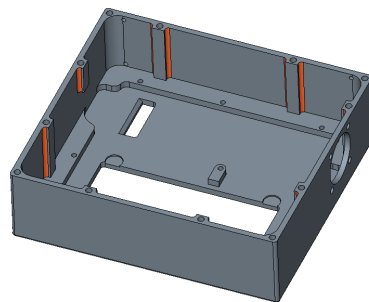
DFMPRO DEMONSTRATION

11

© 2015 Honeywell International All Rights Reserved

Results

- **Two DFM Issues found**
 - Deep Radius
 - Sharp Internal Corner
- **Benefits:**
 - Reduce manufacturing costs by 20%
 - Triggers other potential issues on the designer
 - Lessons Learned for Designer
 - ♦ Reduce design time



12

© 2015 Honeywell International All Rights Reserved

QUESTIONS?

Honeywell

Thank You