

# PTC® Live Global

## CUST 226 - Flexing Your Muscles with PTC Creo Flex Modeling

### Shari Sackett

Senior Product Design Technician - Moen, Incorporated

### Steve Norgrove

Senior Product Design Technician - Moen, Incorporated

### Mike Brattoli

Engineering Systems Admin - Moen, Incorporated

June 8, 2015

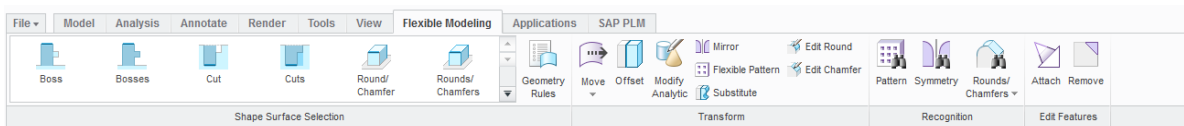


## Flexing Your Muscles with PTC Creo Flex Modeling

PTC® Live  
Global

What is the PTC Creo Flex Modeling extension?

- The Flex Modeling extension is not part of core PTC Creo. (derived from Co-Create/PTC Creo Direct)
- The Flex Modeling extension allows you to edit features and geometry on the fly by utilizing an interactive, dynamic editing tool. It does not support new geometry creation.
- Allows editing without associated parent/child relationships. Preserves original design intent.



Flex Modeling

2

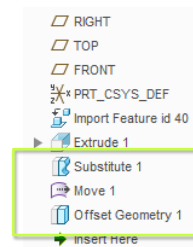
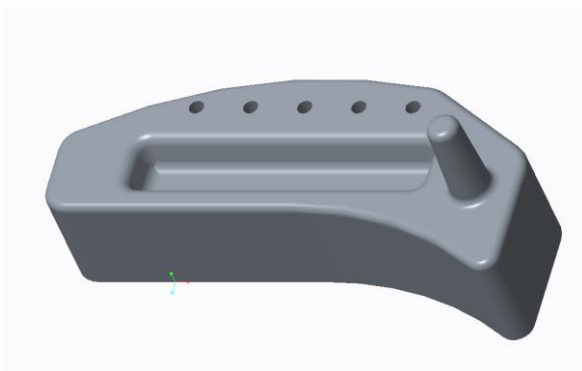
When will I use PTC Creo Flex Modeling?

- Native and Imported Geometry
- New Products/Iterative Development
- Old Models – Difficult to manipulate
- Collaboration with Vendors
- Used by Lite Users



Shape Selection – Identification/Recognition

- Can modify bosses, cuts, rounds and chamfers as well as patterns.
- Each function will appear in the model tree as a feature.



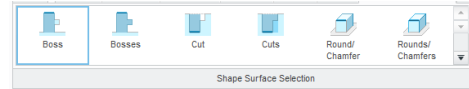
Flex Modeling

4

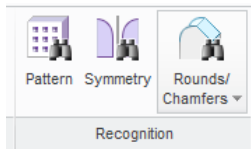
# Flexing Your Muscles with PTC Creo Flex Modeling

## Command Usage - Identification/Recognition

- Feature Selection – Select your seed surface to gather surfaces to manipulate
- Selection feature auto updates to display geometry
- Right click options – shape surfaces, tangent surfaces, or solid surfaces



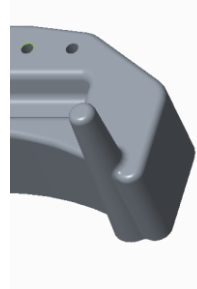
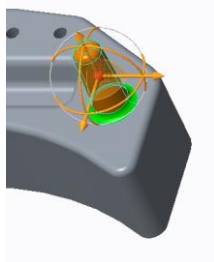
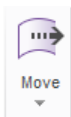
- Feature Recognition – allows you to use similar geometry on the model to make changes to other, similar geometry



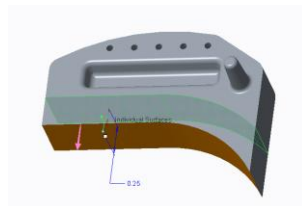
# Flexing Your Muscles with PTC Creo Flex Modeling

## Command Usage

- Move

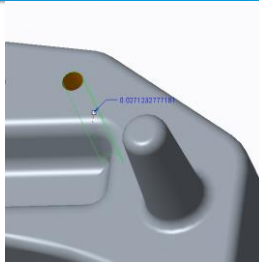
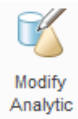


- Offset

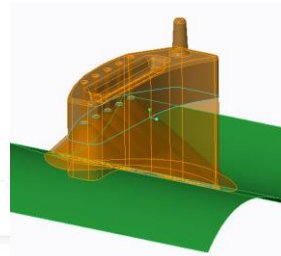
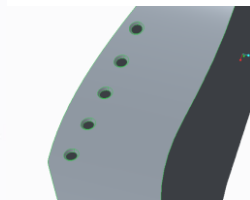
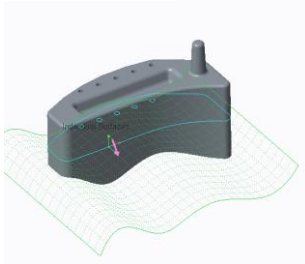


## Command Usage

- Modify Analytics



- Substitute

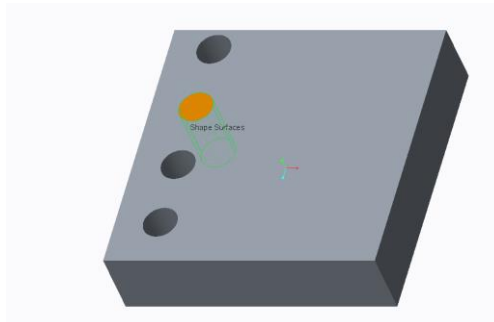
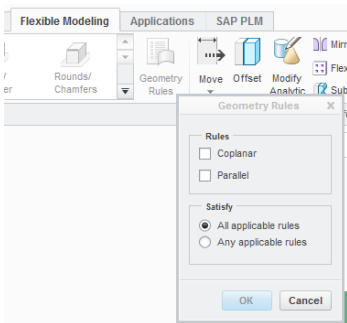


Demo

Flex Modeling

## Command Usage

- Attach/Remove
- Geometry Rules



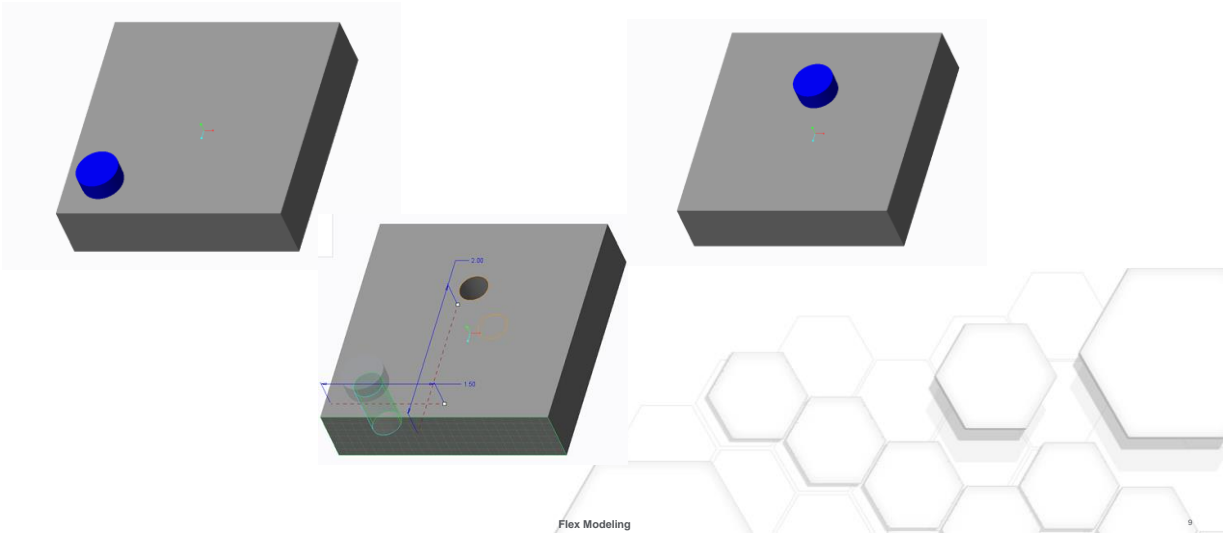
Demo

Flex Modeling

# Flexing Your Muscles with PTC Creo Flex Modeling

Use in an Assembly

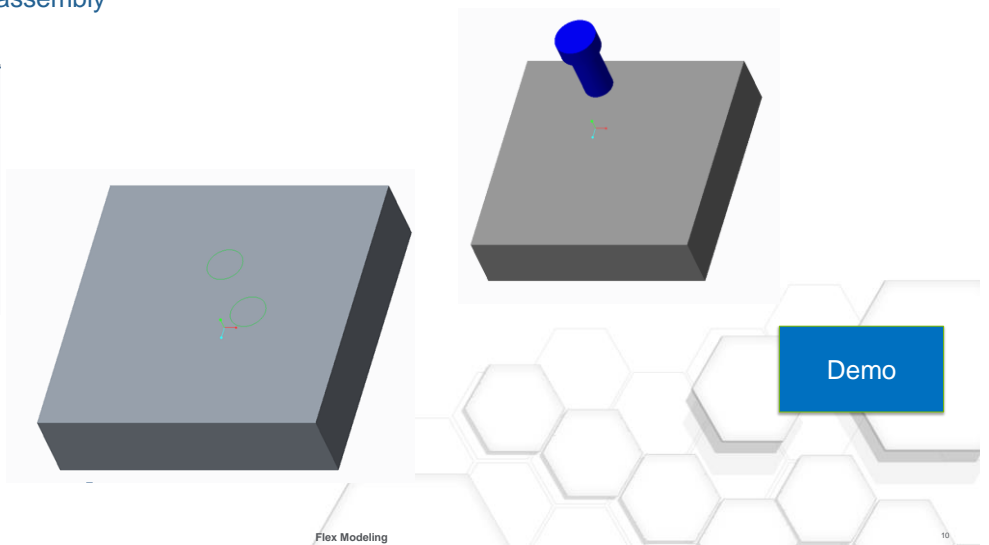
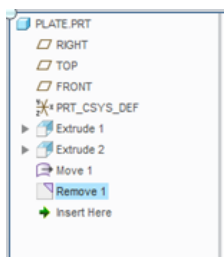
- Parent/Child Relationships



# Flexing Your Muscles with PTC Creo Flex Modeling

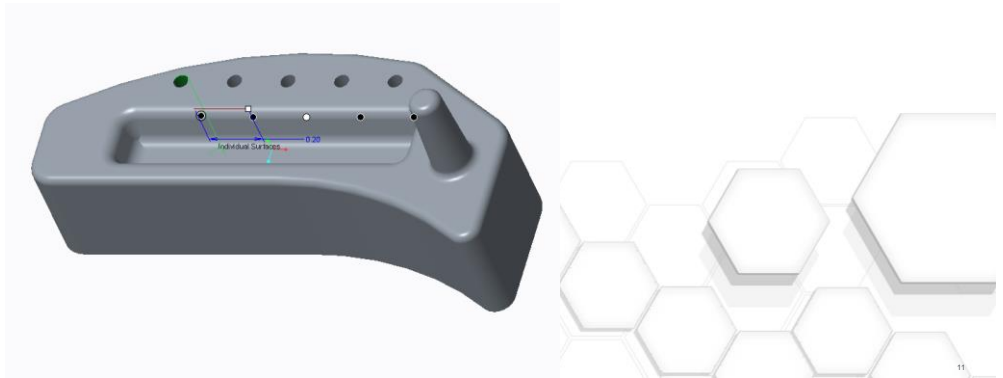
Use in an Assembly

- Attach/Remove in assembly



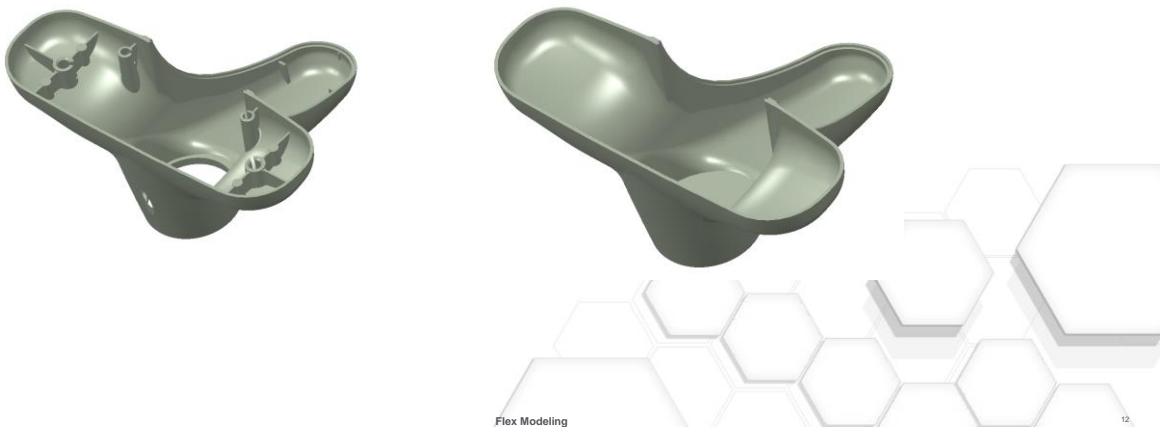
### Patterns/Pattern Recognition

- Pattern recognition tool – allow edit option – # patterns, dimensions, move, modify analytic, and offset
- Must select parent of pattern to edit



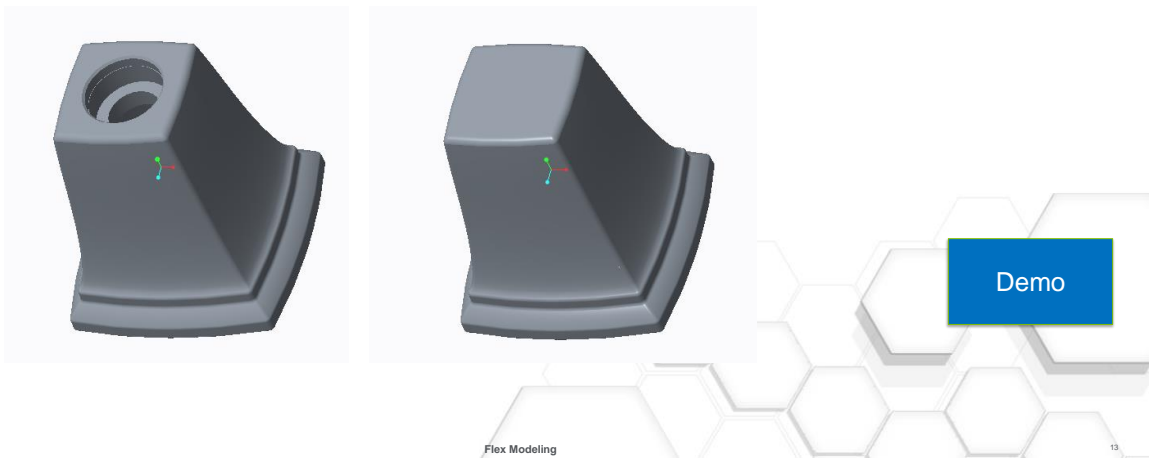
### Imported Geometry Repair

Imported geometry – needed consistent wall thickness



### Benefits

- Imported Geometry – revised internal geometry



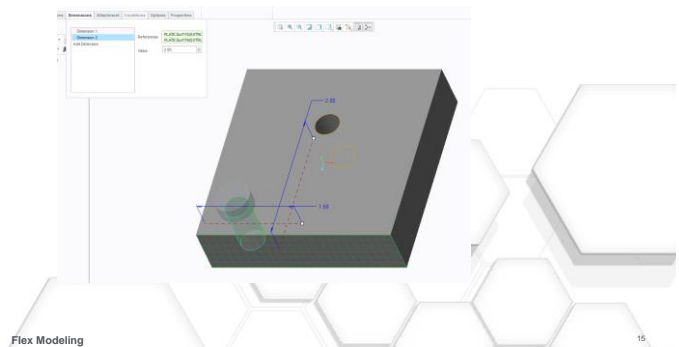
### Benefits

- When to use
- Imported Geometry
- Limitations
- Understand design intent or application for image use



## Best Practices

- Use move with dimensions – can use as shown dimension in drawings
- Create your own dimensioning scheme
- Make sure “allow edit” is checked when trying to edit a pattern and select pattern parent
- Group Flex Modeling features for easy identification in the future



## Questions





- Your feedback is valuable
- Don't miss out on the chance to provide your feedback
- Gain a chance to win an instant prize!
- Complete your session evaluation now

# PTC® Live Global