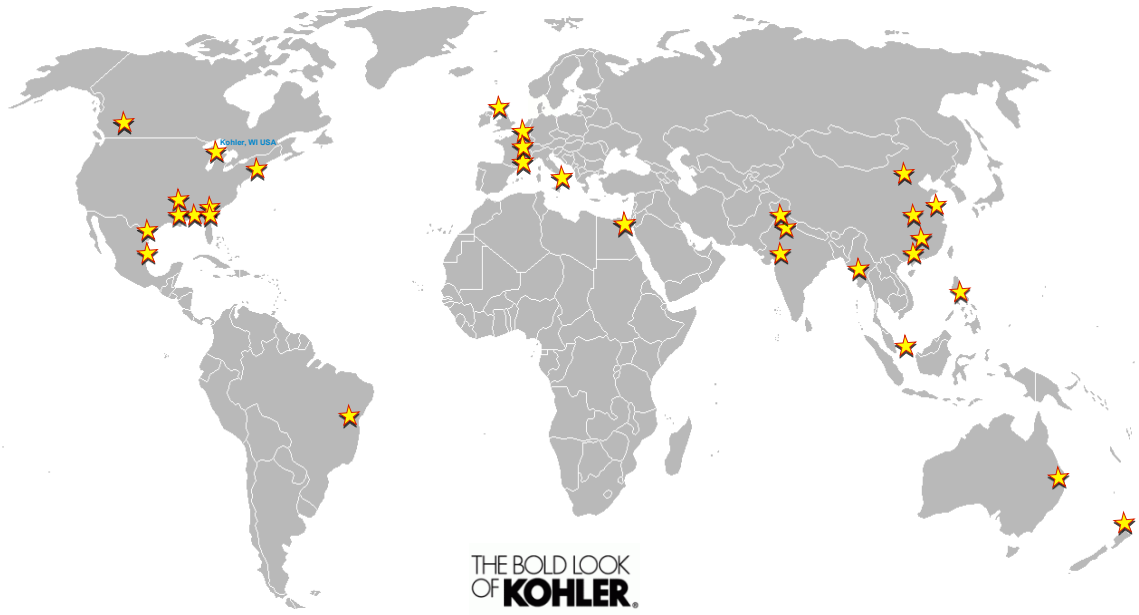
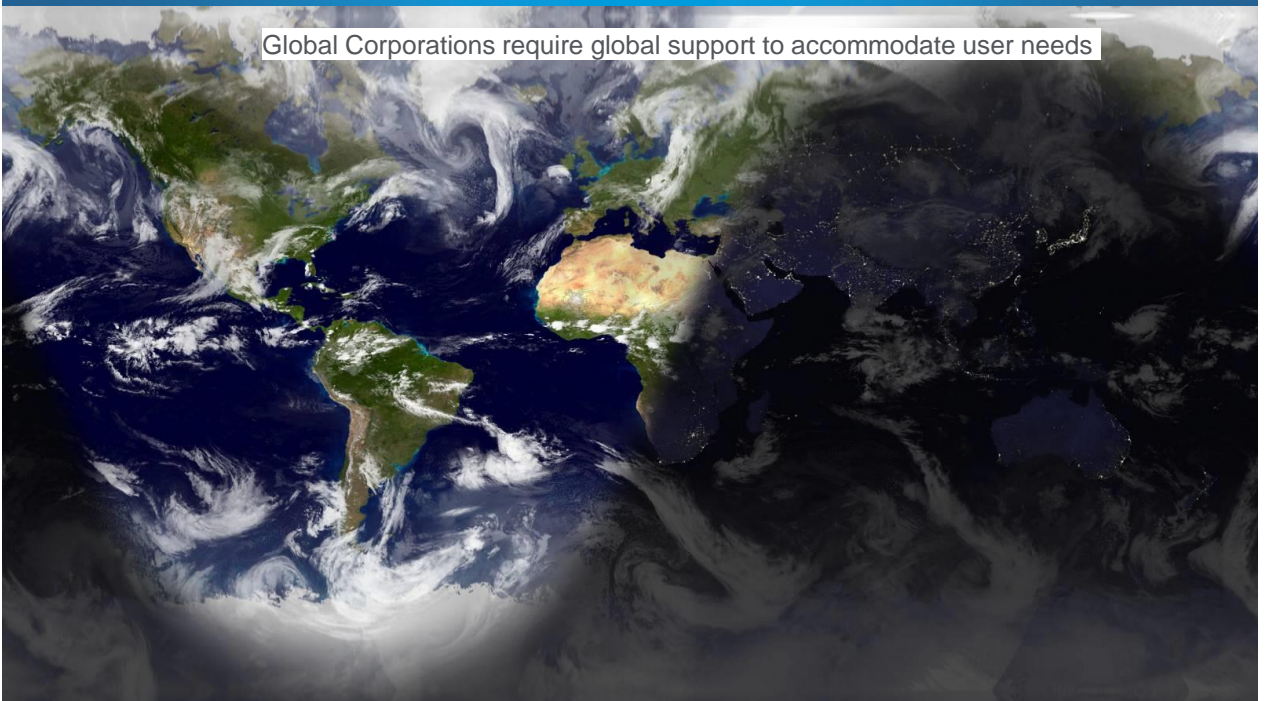


Over 600 PTC Creo and 2000 Windchill users worldwide...
 -30 design locations
 -6 continents

PTC Live Global



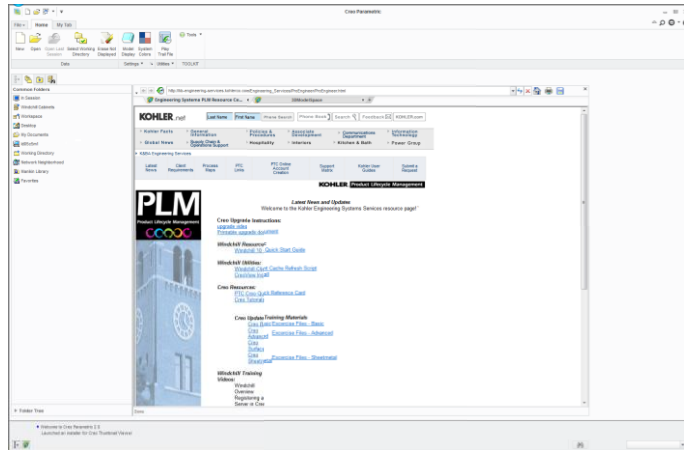
Global Corporations require global support to accommodate user needs



PTC Live
Global

Uncontrolled variation is the enemy of quality – Edward Deming (1980)



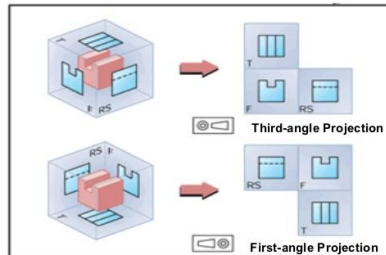


7

Mapping Requirements



First and Third Angle Projections



- First Angle
- Third Angle

8

Mapping Requirements



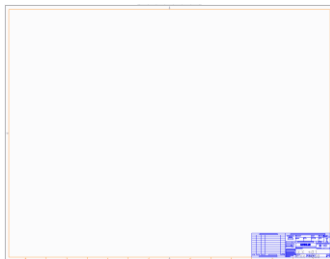
Mapping Requirements



stores	String	Republic	<input type="checkbox"/>	<input checked="" type="checkbox"/> Full	User-Def.	<input checked="" type="checkbox"/>
		Banana Republic				
		Gap				
		Old Navy				

```

stores String Republic
Banana Republic
Gap
Old Navy
    
```



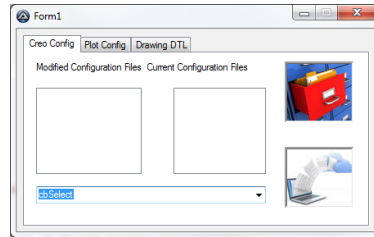
```

stores String Republic
Banana Republic
Gap
Old Navy
    
```

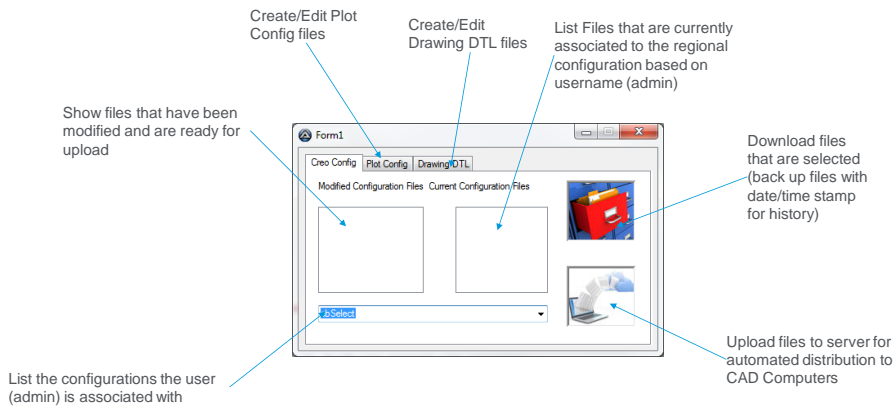
```

stores String Republic
Banana Republic
Gap
Old Navy
    
```


- Allow access to configs controlled by that regions admin (based on agreed upon options)
 - List configs the admin is in control of (can be multiple configs/or multiple admins/config)
 - Allow addition of configurations for area
- Backup config as history with date/time stamp (recovery option)
- Allow full configuration of PTC Creo environment in that region/department
 - Config.pro
 - Config.sup
 - Mapkeys
 - Toolkit application registration
 - Drawing DTL settings
 - Gui customization
 - Parameter restriction lists



13



14

```

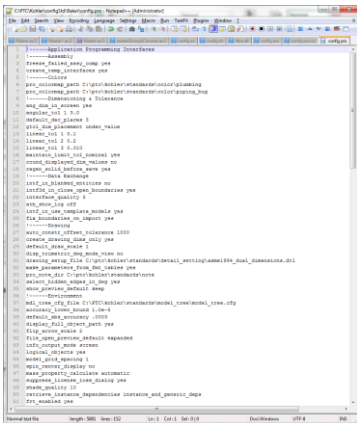
Region ### START Koda GUI section ### Form=c:\scripts\autoit\ptc\admin\adminform.kxf
$Form1_1 = GUICreate("Form1", 439, 247, 192, 154)
$tabDITL = GUICtrlCreateTab(0, 0, 425, 233)
$tabConfig = GUICtrlCreateTabItem("Crea Config")
$tabSelect = GUICtrlCreateCombo("cbSelect", 24, 192, 281, 25, BitOR($CBS_DROPDOWN,$CBS_AUTOHSCROLL))
$confiList = GUICtrlCreateListView("", 192, 72, 113, 105)
$btnUpload = GUICtrlCreateButton("Upload", 328, 144, 85, 75, $BS_BITMAP, BitOR($WS_EX_CLIENTEDGE,$WS_EX_STATICEDGE))
GUICtrlSetImage(-1, "C:\scripts\AutoIT\PTC\admin\FileUpload.bmp", -1)
GUICtrlSetTip(-1, "Upload Selected Files to Server")
$btnSelectLocal = GUICtrlCreateButton("Select Local", 328, 40, 85, 75, $BS_BITMAP, BitOR($WS_EX_CLIENTEDGE,$WS_EX_STATICEDGE))
GUICtrlSetImage(-1, "C:\scripts\AutoIT\PTC\admin\fileInCabinet.bmp", -1)
GUICtrlSetTip(-1, "Select Local File")
$Label1 = GUICtrlCreateLabel("Current Configuration Files", 160, 40, 127, 17)
$ListView1 = GUICtrlCreateListView("", 24, 72, 129, 105)
$Label2 = GUICtrlCreateLabel("Modified Configuration Files", 24, 40, 133, 17)
$tabPlot = GUICtrlCreateTabItem("Plot Config")
$tabDITL = GUICtrlCreateTabItem("Drawing DITL")
GUICtrlCreateTabItem("")
GUISetState($SW_SHOW)
#EndRegion ### END Koda GUI section ###

While 1
    $nMsg = GUIGetMsg()
    Switch $nMsg
        Case $GUI_EVENT_CLOSE
            Exit
        EndSwitch
    WEnd

```

Regional Admin

Edit



Upload

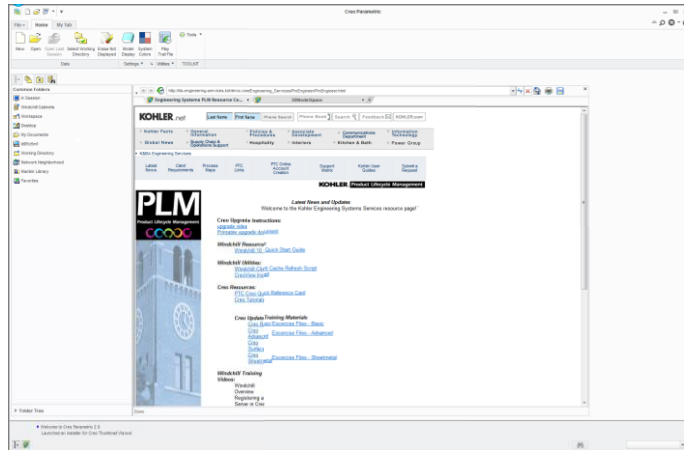


Automated Distribution



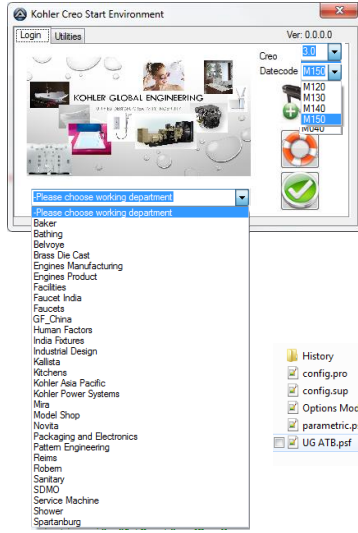
Audit





Mapping Requirements

Baker	12/29/2014 10:09 ...	File folder
Bathing	5/1/2014 2:38 PM	File folder
Belvoeye	1/27/2015 12:43 PM	File folder
Brass Die Cast	5/1/2014 2:38 PM	File folder
Engines Manufacturing	5/1/2014 2:38 PM	File folder
Engines Product	8/7/2014 2:45 PM	File folder
Facilities	5/1/2014 2:38 PM	File folder
Faucet India	3/13/2015 11:52 AM	File folder
Faucets	7/23/2014 3:19 PM	File folder
GF_China	3/11/2015 8:23 PM	File folder
Human Factors	7/23/2014 3:19 PM	File folder
India Fixtures	9/11/2014 9:53 AM	File folder
Industrial Design	2/17/2015 10:26 AM	File folder
Kallista	7/23/2014 3:19 PM	File folder
Kitchens	7/23/2014 3:19 PM	File folder
Kohler Asia Pacific	9/9/2014 8:26 AM	File folder
Kohler Power Systems	7/23/2014 3:19 PM	File folder
Mira	10/29/2014 9:38 AM	File folder
Model Shop	7/23/2014 3:19 PM	File folder
Novita	7/23/2014 3:19 PM	File folder
Packaging and Electronics	7/23/2014 3:19 PM	File folder
Pattern Engineering	7/23/2014 3:19 PM	File folder
-Please choose working department	10/29/2014 9:38 AM	File folder
Reims	3/25/2015 2:02 PM	File folder
Robern	5/1/2014 2:38 PM	File folder
Sanitary	5/1/2014 2:38 PM	File folder
SDMO	5/1/2014 2:38 PM	File folder
Service Machine	5/14/2015 11:02 AM	File folder
Shower	5/1/2014 2:38 PM	File folder
Spartanburg	5/1/2014 2:38 PM	File folder
Technical Publications	5/1/2014 2:38 PM	File folder
TEST-Belvoeye	3/25/2015 2:02 PM	File folder
Troyes	1/27/2015 12:43 PM	File folder



Common Files	4/6/2015 2:57 PM	File folder
M100	4/6/2015 3:50 PM	File folder
M101	4/6/2015 3:51 PM	File folder
M120	4/6/2015 3:52 PM	File folder
M130	3/23/2015 3:50 PM	File folder
M140	4/6/2015 3:52 PM	File folder
Parametric	3/20/2015 11:07 AM	File folder
Simulate	9/8/2014 9:37 AM	File folder

M150	5/7/2015 8:51 AM	File folder
M140	4/6/2015 2:57 PM	File folder
M130	4/6/2015 2:56 PM	File folder
M120	9/8/2014 9:37 AM	File folder

History	5/1/2014 2:38 PM	File folder
config.pro	3/4/2014 12:28 PM	PRO File 6 KB
config.sup	3/4/2014 12:29 PM	SUP File 2 KB
Options Modeller.psf	2/24/2015 12:44 PM	PSF File 2 KB
parametric.psf	2/24/2015 12:44 PM	PSF File 2 KB
UG ATB.psf	2/24/2015 12:44 PM	PSF File 2 KB

Combining Files

config.pro	3/4/2014 12:28 PM	PRO File	6 KB
config.sup	3/4/2014 12:29 PM	SUP File	2 KB
Options Modeler.psf	2/24/2015 12:44 PM	PSF File	2 KB
parametric.psf	2/24/2015 12:44 PM	PSF File	2 KB
UG ATB.psf	2/24/2015 12:44 PM	PSF File	2 KB

CADSEEK Polaris	7/23/2014 3:19 PM	File folder	
KohlerStdsymbol	5/3/2014 2:41 PM	File folder	
Plotter	9/13/2013 3:49 PM	File folder	
Resources	3/17/2015 1:06 PM	File folder	
x64	3/4/2013 10:09 AM	File folder	
x86	3/4/2013 10:09 AM	File folder	
config.ini	5/8/2015 1:42 PM	INI File	4 KB

Combining Files

```

[#####]
UPDATE SERVER ->cd45939a20f082824011790c47078afcf64c1c2a114b492e2893090c0e3f0057a1e9247042d6754052f7b7289c004a6046046164c227a123c2cfl3j0f0ca25368f8e1d8328b995ca777dc
;update server to check for configuration and start script updates.
[#####]
[#####]
PageURL = http://kb-engineering-services.kohlerco.com/Engineering_Services/Pro/Engineer/ProEngineer.html
;internal resource page that will be displayed when the "Help" button is selected.
[#####]
[#####]
PTC Help Center URL = "http://www121.kohlerco.com/000/000_help/"
;URL leading to the PTC Help Center install
[#####]
[#####]
Load Point = "C:\PTC"
;Loadpoint for all PTC configurations
[#####]
STARTBIN = "C:\PTC\Creo\Parametric\bin"
;Start bin for Creo (based on creo loadpoint)
[#####]
[#####]
Company Config Location = "C:\PTC\Mobler"
;Folder location of all company configuration files
Config Style = Split
;Config style determines how the start program will handle configuration files. "Standard" will copy config.pro, config-sup, _cmr, _ul files as is. "Split" will combine split
;configuration files for regional administration with centralized global standards (i.e.: combine config.pro (regional) with config.pro(global) with "megapys" to form config.pro)
[#####]
[#####]
PTC Common = CREO_COMMON_FILES
;PTC rollout in the psf file that will determine the common files location for the current date code
[#####]
[#####]
WorkDir = C:\Users\
;Working directory for all Run-Handhill information (excluding trail files). Circular reference files etc will be stored in this location.
[#####]
[#####]
PTC Root = "C:\PTC"
root folder for PTC installs
PTC Folder = "Creo"
;loadpoint root for Creo installation
[#####]
[#####]
Application Application Location = "C:\PTC\Mobler\pupApp"
;location for supplementary application created for location.
CADSeeK2 =
CADSeeK4 =
CADSeeK2 Install =
CADSeeK4 Install =
[#####]
[#####]
Log Directory = "C:\PTC\Mobler\Logs"
;Directory logs will be written to
Log Age = 120000
;the maximum age of the files to keep in seconds, items longer will be deleted automatically (purged) both trail and additional logging that is enabled (determined by 24 hrs x 60 min x 60
;Update Transfer Log = "C:\PTC\Mobler\Logs\configUpdate"
;log of transferred files during update process
[#####]
[#####]
Standard Files Folder = "Please choose working department"
[#####]
[#####]
PSF File = parametric.psf
;.psf file location used for Creo license and configuration. Will be written to end information called from during script launch.
[#####]
[#####]
PTC Execute = parametric.exe
[#####]
[#####]
[FlexList-Feature-Line-Name]

```

- Education
- Agreement

21

Lessons Learned

- **Manage**
 - Make your programs dynamic
 - Read in folders and files to create drop downs and lists
 - Avoid hard coded variables, use ini files to allow for updates
 - Server
 - Users and regional admins are smart.... But everyone makes mistakes
 - Encrypt your update server path so users cannot access the server directly
 - History
 - Back up files when you change them for disaster recovery
 - Get it in writing
 - Decide guidelines as a team
 - Ensure the tools are created to accommodate the guidelines
- **User**
 - Change only what you are supposed to

22

- Your feedback is valuable
- Don't miss out on the chance to provide your feedback
- Gain a chance to win an instant prize!
- Complete your session evaluation now

PTC® Live Global