

TIF Workbench (TIF-WB)

1 General conditions:

1. Download TIF-WB from [Github](#) (cross check this tutorial with [documents/TIF Workbench User and Admin Guide.docx](#))
2. Build with Netbeans (JDK 8 required)
3. Netbeans stores the packaged Java Library `TifWorkbench.jar` after building TIF-WB in a directory called `dist`. Copy this folder to any location (or directly use `dist` as your work directory):
This folder (working directory) will be referred to as `<TIF install directory>` in the course of this tutorial.
4. Integrity Client 10.9 (ILM Client 11.2 was not working)
5. Ant from v1.2.8 must be installed, see [Ant's Binary Distributions](#)
 - a. Unzip it into any local directory = `<ANT install directory>`
 - b. set environment variable: `ANT_HOME=<ANT install directory>`
 - c. change environment variable: `PATH=%PATH%;<ANT install directory>\bin`
6. Java 8 Runtime, e.g. JRE of Integrity Client.

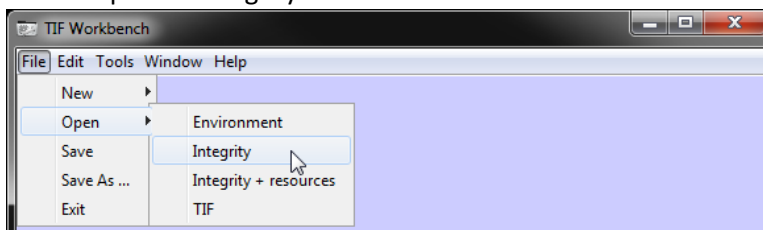
2 Use case: Extract differences between two servers and generate scripts

The creation of a diff between the configurations of two Integrity servers using the TIF-WB takes place in the two successive but independent steps:

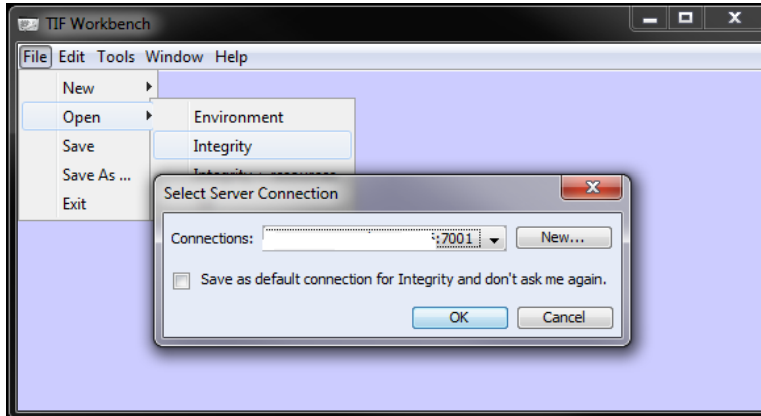
1. Export Integrity server configurations
2. Find differences between two Integrity servers and generate CLI commands for all differences

2.1 Export Integrity server configurations

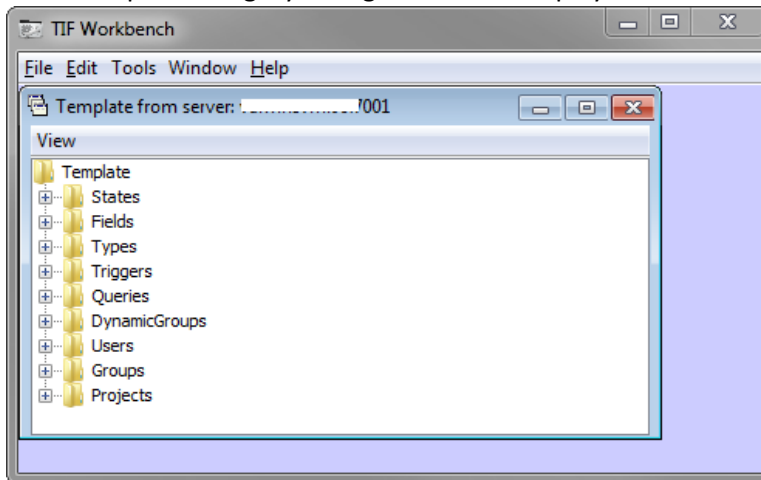
1. Establish connection to both Integrity Servers with Integrity Client
2. TIF-WB start: `java -jar <TIF install directory>\TifWorkbench.jar`
e.g.: `C:\Projects\TIFWorkbench\dist>"\Program Files (x86)\Integrity\IntegrityClient10_9\jre\bin\java.exe" -jar TifWorkbench.jar`
3. Export Integrity configuration for each server:
 - 3.1. File → Open → Integrity



3.2. Choose connection



3.3. TIF-WB exports Integrity configuration and displays a tree view in the end:



3.4. Now save the configuration with File → Save As ... to a specific folder (Choose any file name and directory, e.g., tif-development.xml)

4. Repeat step 2 for the other server and export the configuration to a different file (e.g., tif-staging.xml)

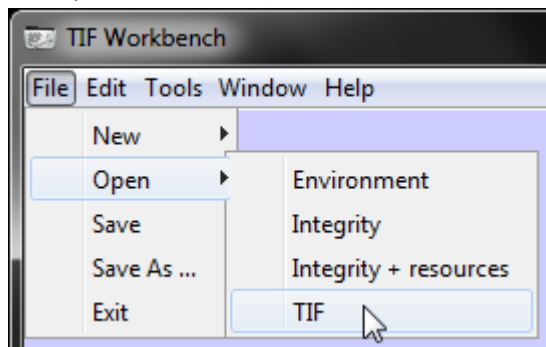
2.2 Find differences between two integrity servers

1. Establish connection to both Integrity Servers with Integrity Client

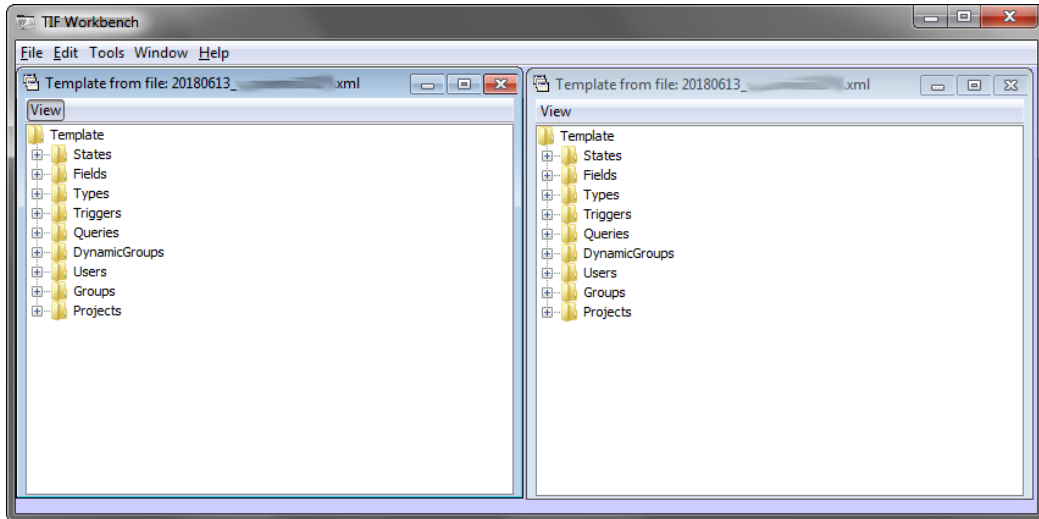
TIF-WB start: <TIF install directory>\TifWorkbench.jar

e.g.: C:\Projects\TIFWorkbench\dist>"\Program Files (x86)\Integrity\IntegrityClient10_9\jre\bin\java.exe" -jar TifWorkbench.jar

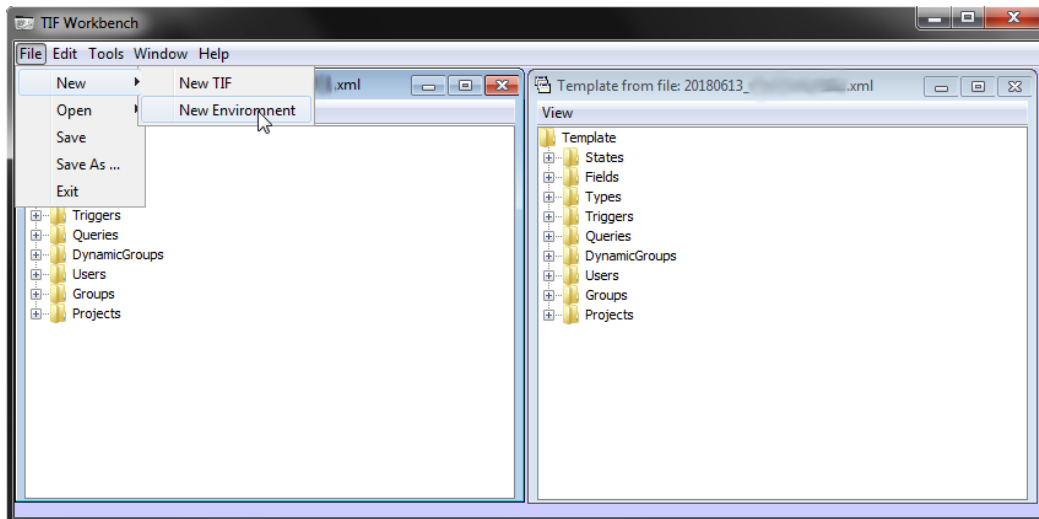
2. Open server configurations (stored in XML) to compare with File → Open → TIF, if not still open from previous action (see 2.1)



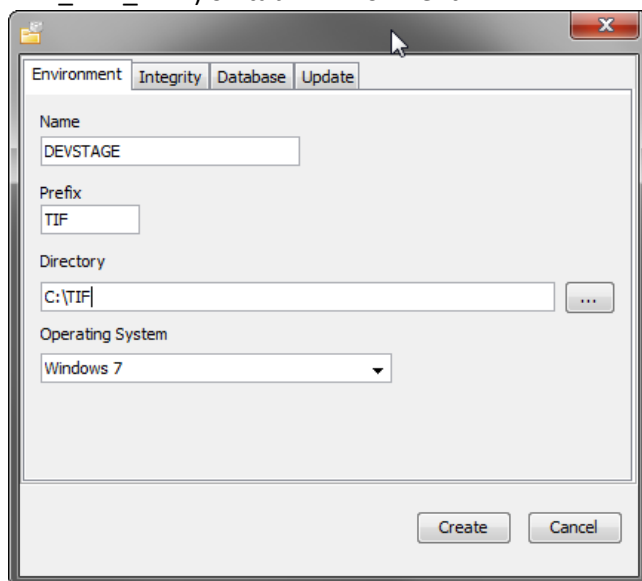
3. Configurations are displayed as a tree structure in separate views:



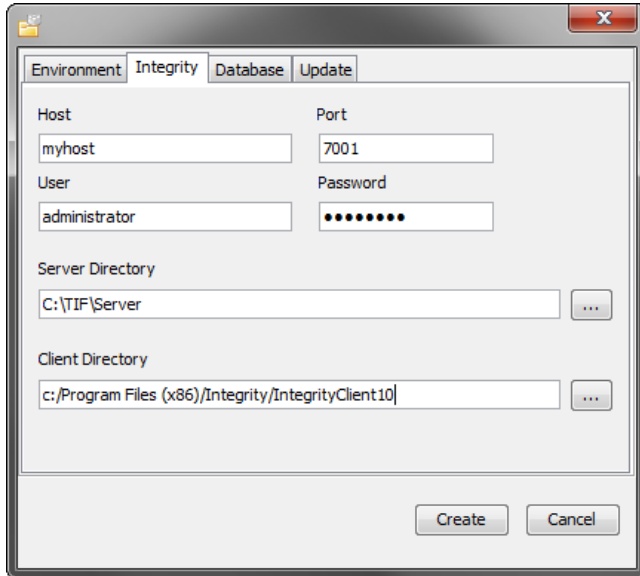
4. Make a new environment for diff configuration build:



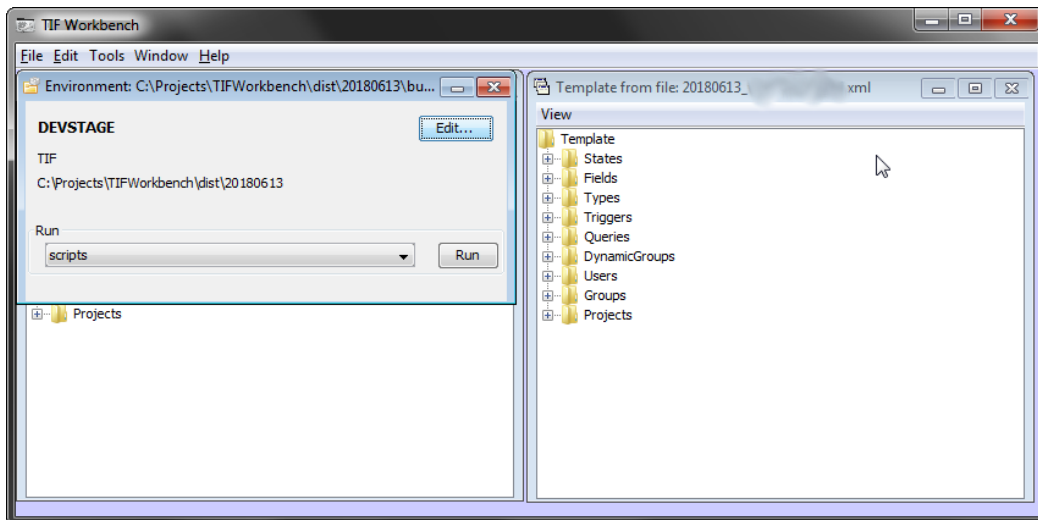
4.1. A dialog window pops up: Specify name, prefix, and directory (referred to as <TIF_ENV_DIR>) on tab "Environment"



4.2. Switch to tab Integrity and specify an empty server directory



4.3. Hit *Create* to create the environment. The dialog disappears and a new view is opened in the main TIF window:

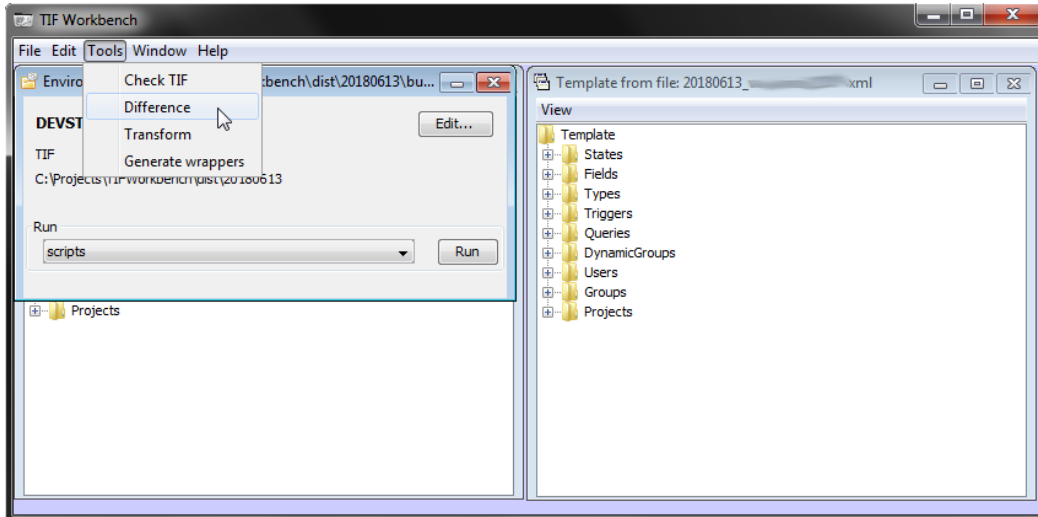


4.4. Further settings can be customized by hitting *Edit...*

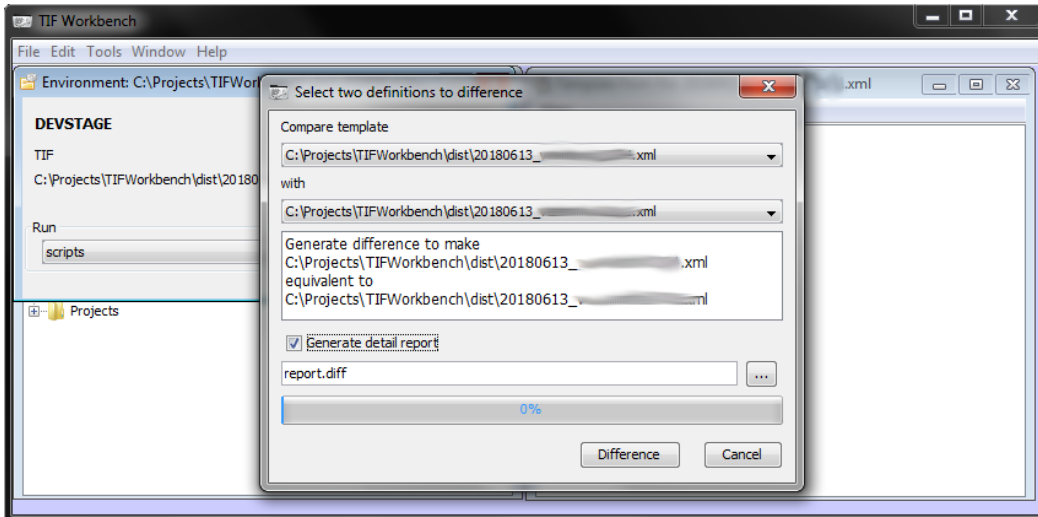
e.g. information for host, port, user, and password that are used scripts for the generated scripts.

5. Copy File: from Github-Repository [samples\SimpleTM\static-data.xml](#) to <TIF_ENV_DIR> (TIF-WB requires the existence of the file to generate the scripts, otherwise an error is generated indicating that this file is missing)

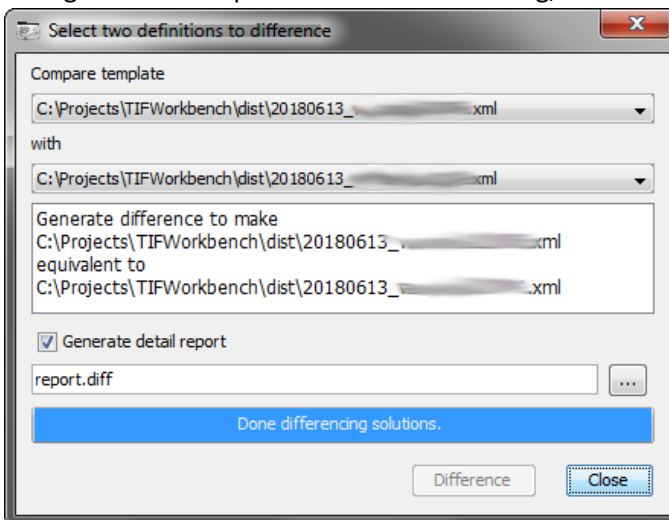
6. Search for differences between the server configurations to extract and save them



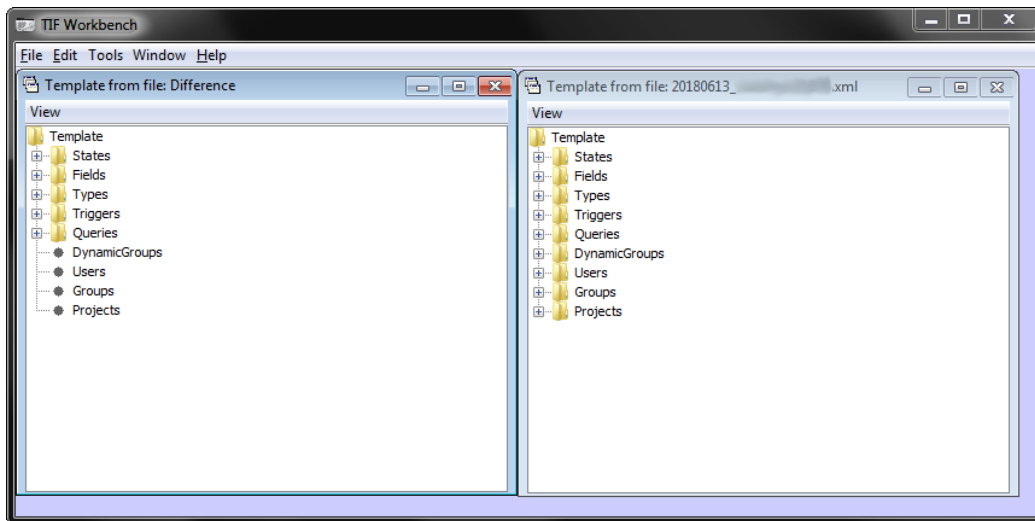
6.1. Select configuration base (*Compare template*, usually test/staging/productive system) and target (*with*, usually development system), activate *Generate detail report* and hit *Difference*



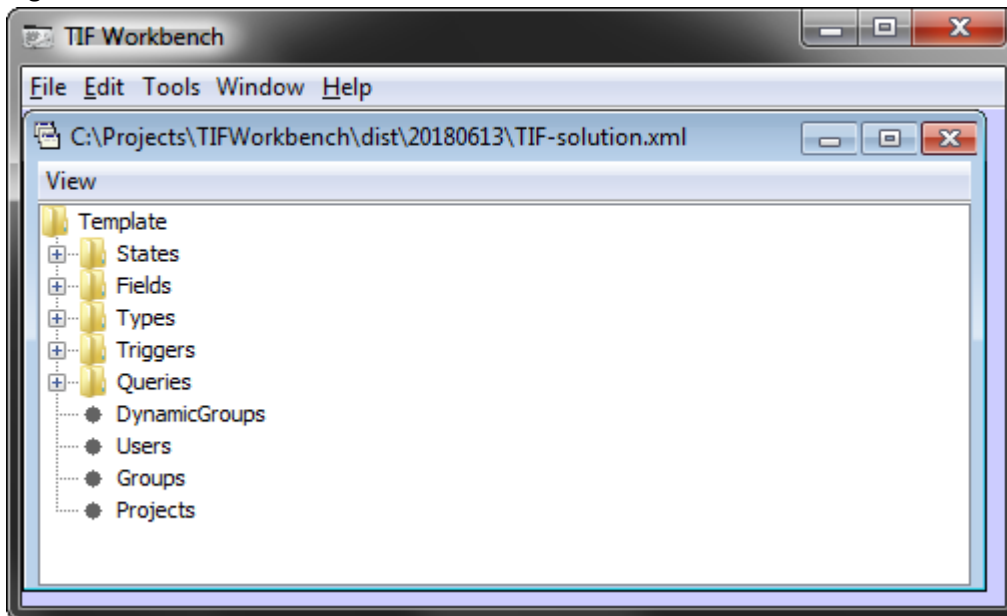
Notes: "Compare template" is selected with respect to the system including the configuration changes that might be of interest, whereas "with" refers to the base configuration. Comparison does not take long, hit Close to close the dialog:



7. Result is shown in main window as a tree consisting of the different configuration: "Template from file: Difference"

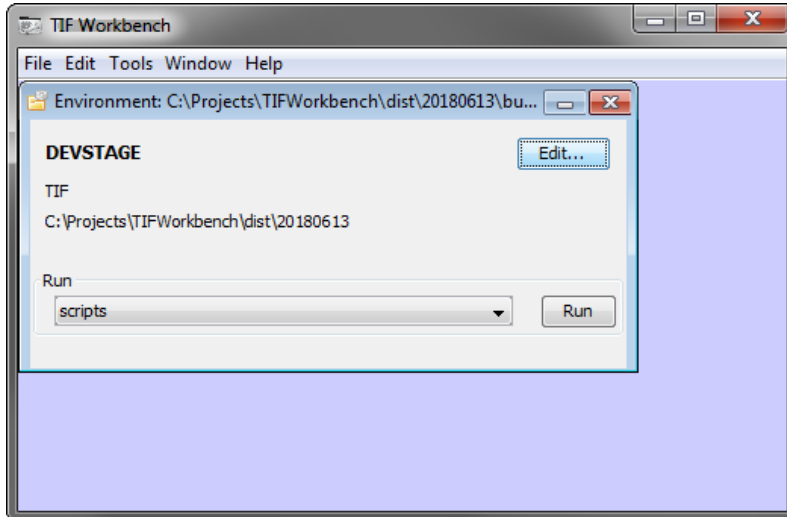


8. Store the "Template from file: Difference" with File → Save as... and overwrite <prefix>-solution.xml in your TIF environment, which has been created by you earlier in Step 4 e.g. in the course of this documentation: TIF-solution.xml:



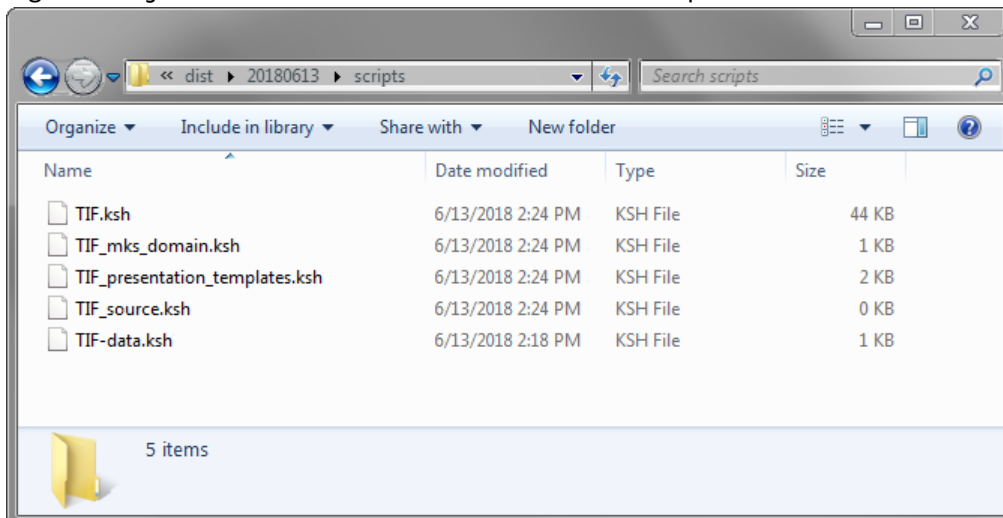
9. Generate scripts

9.1. Switch to environment view (Window → Environment ...)



9.2. Press the button "Run"

9.3. Result: Scripts are located in the directory of your TIF environment
e.g. C:\Projects\TIFWorkbench\dist\20180613\scripts



9.4. TIF.ksh contains all the differences between the configurations reflected as CLI commands.
This might be used in a migration scenario.

Good luck!