
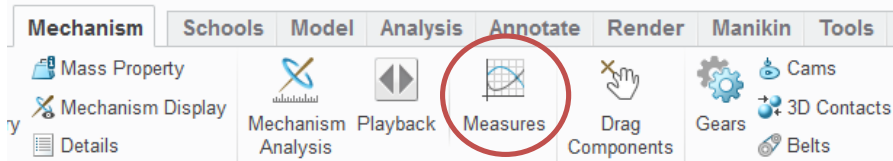


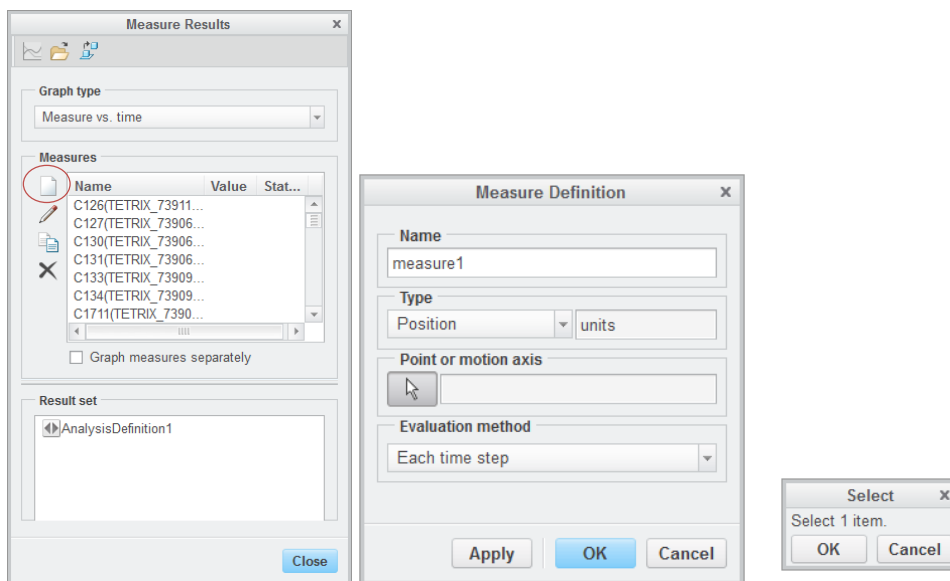


## Analyzing mechanism performance

1. Open your robot model.
2. From the Mechanism tab, click on **Measures** .





3. Select **AnalysisDefinition1**  from the Result Set field.
4. Click **Create new measure** .

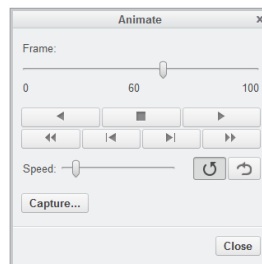


The Measure Definition window opens. The arrow button under Point or motion axis is activated.

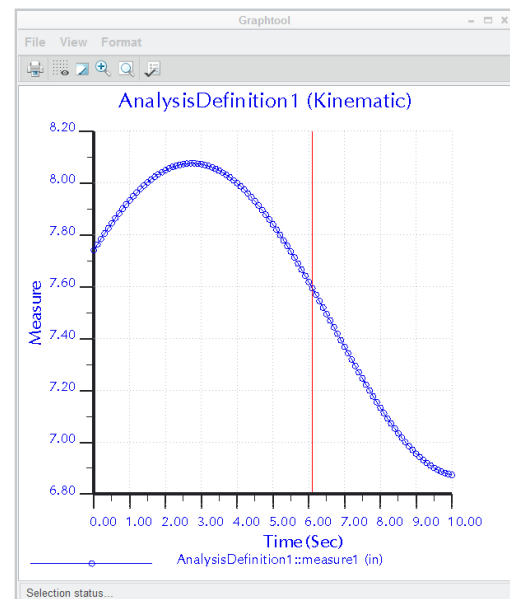
A second pop-up window appears prompting you to select an item.



5. Click on the front right driven wheel to select a point. Click **OK**.
6. The Measure Definition window is reactivated. The selected point is now listed in the Point or motion axis field. Click **OK**.
7. In the Measure Results window, select the new measurement from the list of measures.
8. In the example, the new measurement is named **measure1**.
9. Select **Graph**  to see the new measure.
10. The position of the point selected on the wheel is plotted throughout the entire analysis.
11. Close the dialog box but leave the graph open.
12. Play the analysis playback again.
13. A red line will indicate the position on the graph as the wheel turns.

14. From the Mechanism toolbar, click **Close** .



15. Click **Don't Save** to exit without saving the analysis playback.



16. From the Model toolbar, click **Regenerate** .
17. You may need to regenerate the model multiple times. The indicator at the bottom of the window appears green when the model is fully regenerated.
18. From the File menu, select **Close**  to close the robot system model.

ptc academic program

Questions or ideas? Drop us a note at [FIRST@ptc.com](mailto:FIRST@ptc.com).

Twitter: @PTC\_FIRST

Facebook: @ptcfirst