

# Link Windchill IBA's to Excel cells

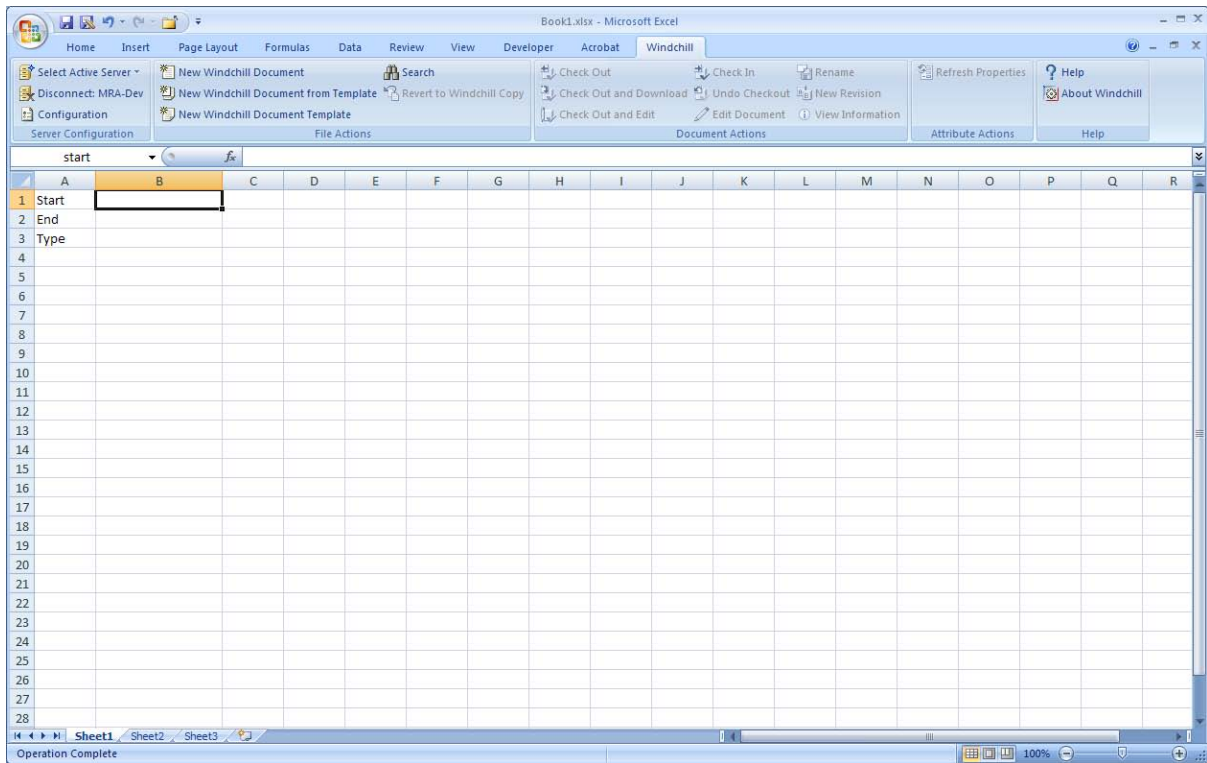
---

## Table of Contents

Name the cells.....	2
Check in the document.....	2
Link attributes to content .....	3
Display the attributes.....	6

## Name the cells

Create a new document and name the required cells



In my example I name cells B1 to B3

## Check in the document

Check the document in the first time to populate the Windchill attributes.

Then check the document out to create the links to the content.

## Link attributes to content

Select the Windchill Attribute

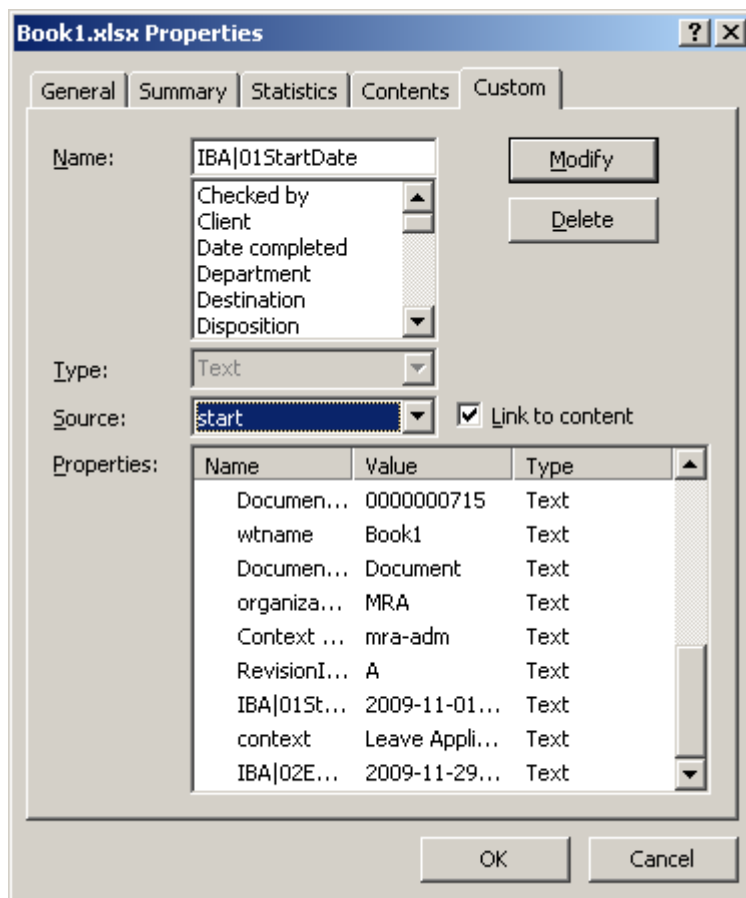
The dialog box 'Book1.xlsx Properties' has tabs for General, Summary, Statistics, Contents, and Custom. The Custom tab is active. It contains the following fields:

- Name:** IBA|01StartDate (with Modify and Delete buttons)
- Type:** Text
- Value:** 2009-11-01T22:00:00 (with a checkbox for 'Link to content')
- Properties:** A table listing attributes.

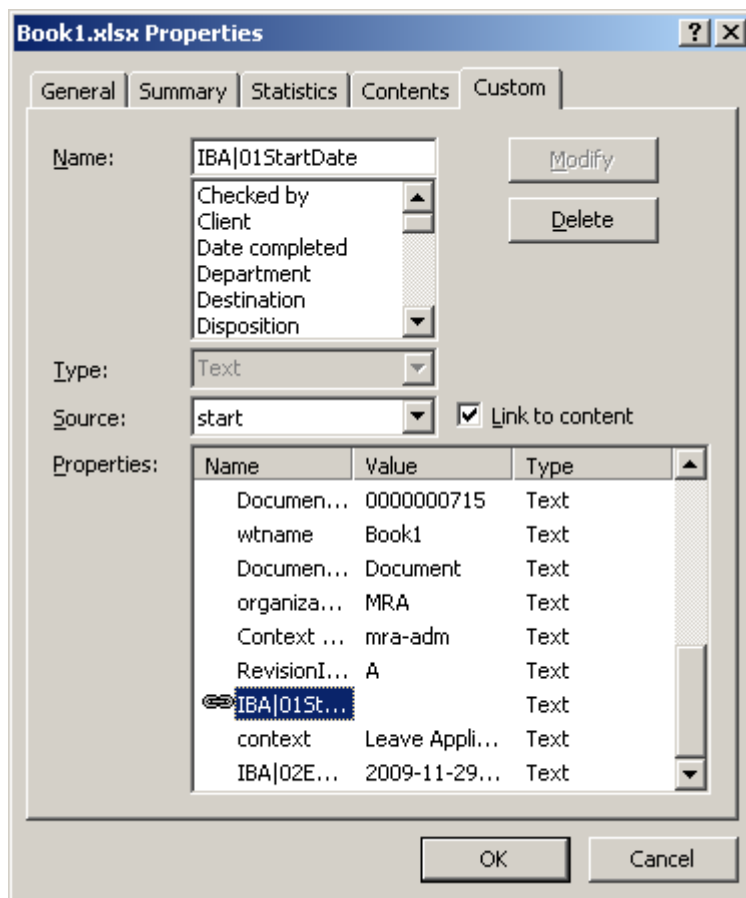
Name	Value	Type
Documen...	0000000715	Text
wtname	Book1	Text
Documen...	Document	Text
organiza...	MRA	Text
Context ...	mra-adm	Text
RevisionI...	A	Text
<b>IBA 01St...</b>	2009-11-01...	Text
context	Leave Appli...	Text
IBA 02E...	2009-11-29...	Text

Buttons: OK, Cancel

Select Link to content and select the named cell's name from the source drop down list.

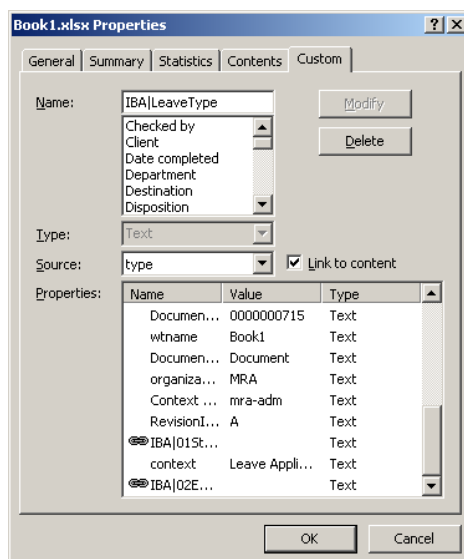


Select "Modify"

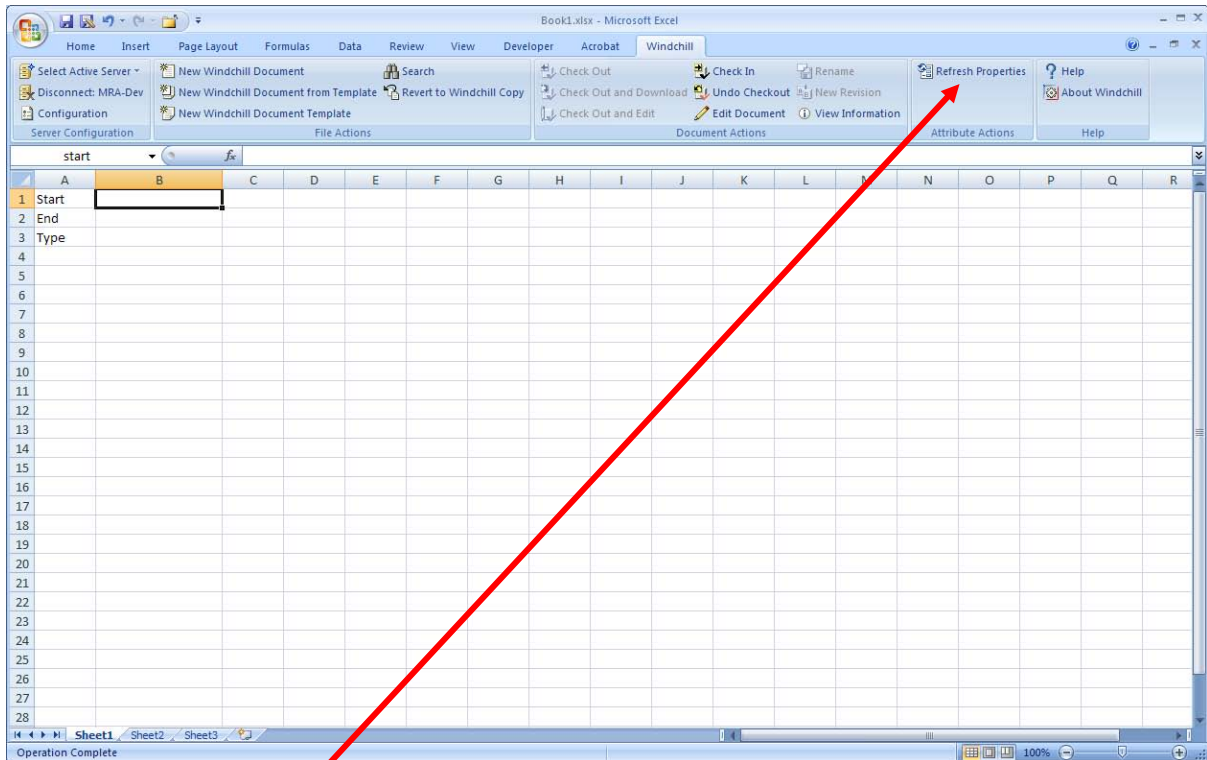


When you select "Modify" the value for the attribute will go blank...don't worry about this as it's solved a bit later.

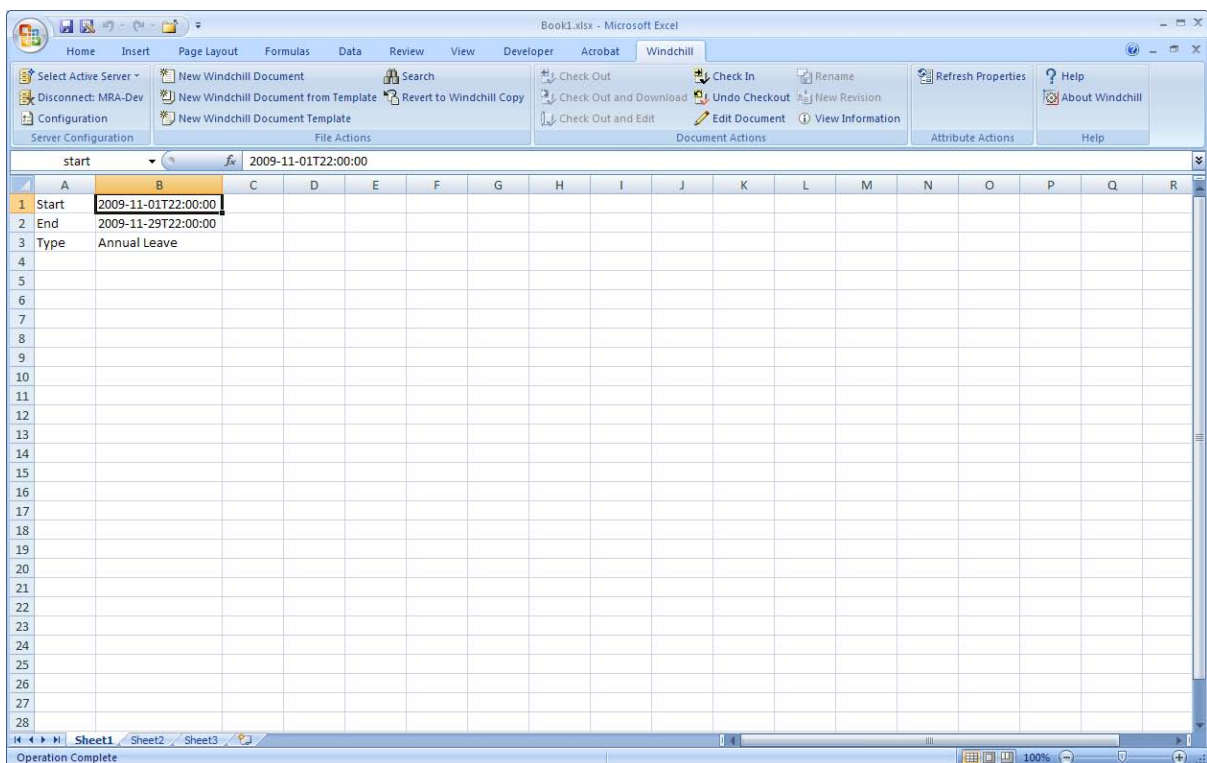
Now link the rest of the attributes in the same way.



## Display the attributes



Select the "Refresh Properties" option.



Now the values are displayed in the named cells and the document can be checked in.