

Windchill 9.1
Worker Installation Notes
on a
Windows 2008 Enterprise Edition x86_64bit Platform

Author: Patrick Chin
Date: 2008.10.29
Company: Com Dev International Ltd.
Revision: A (Draft)

System Setup

1. 3rd Party Software

As Administrator:

Install the following patch:

<http://www.microsoft.com/downloads/en/confirmation.aspx?familyId=bd2a6171-e2d6-4230-b809-9a8d7548c1b6&displayLang=en>

- Create a new directory in root d:\ptc
- install jdk:
 - used this 64 bit version of [Java](http://java.sun.com) from this site <http://java.sun.com>
 - installation home directory for jdk d:\ptc\Java\jdk1.6.0
 - installation home directory for jre d:\ptc\Java\jre
 - install all options of the jdk software
- install ProE
 - Install the license server in the directory d:\ptc\CAD\ProE\flexnet
 - Install ProE Wildfire 4.0 in the directory d:\ptc\CAD\ProE\WF4
 - Install ProE Wildfire 5.0 in the directory d:\ptc\CAD\ProE\WF5
- Install ProductView Adapters
 - Used version MED-60464-CD-121_M050_Windows
 - Installation home directory for ProductView Adapters: d:\ptc\productview_adapters
- Create Multiple ProE Workers
 - Create a directory structure as below:
 - For plm server
 - D:\ptc\Workers
 - D:\ptc\Workers\plm
 - D:\ptc\Workers\plm\Document
 - D:\ptc\Workers\plm\Custom
 - D:\ptc\Workers\plm\CAD
 - D:\ptc\Workers\plm\CAD\ProE
 - D:\ptc\Workers\plm\CAD\ProE\WF4
 - D:\ptc\Workers\plm\CAD\ProE\WF4\worker1
 - D:\ptc\Workers\plm\CAD\ProE\WF4\worker1\trail
 - D:\ptc\Workers\plm\CAD\ProE\WF4\worker1\regen
 - D:\ptc\Workers\plm\CAD\ProE\WF4\worker2
 - D:\ptc\Workers\plm\CAD\ProE\WF4\worker2\trail
 - D:\ptc\Workers\plm\CAD\ProE\WF4\worker2\regen
 - D:\ptc\Workers\plm\CAD\ProE\WF4\worker3
 - D:\ptc\Workers\plm\CAD\ProE\WF4\worker3\trail
 - D:\ptc\Workers\plm\CAD\ProE\WF4\worker3\regen
 - D:\ptc\Workers\plm\CAD\ProE\WF4\worker4
 - D:\ptc\Workers\plm\CAD\ProE\WF4\worker4\trail
 - D:\ptc\Workers\plm\CAD\ProE\WF4\worker4\regen
 - D:\ptc\Workers\plm\CAD\ProE\WF4\worker5
 - D:\ptc\Workers\plm\CAD\ProE\WF4\worker5\trail
 - D:\ptc\Workers\plm\CAD\ProE\WF4\worker5\regen
 - D:\ptc\Workers\plm\CAD\ProE\WF4\worker6
 - D:\ptc\Workers\plm\CAD\ProE\WF4\worker6\trail
 - D:\ptc\Workers\plm\CAD\ProE\WF4\worker6\regen
 - Repeat for plmtest, plmsandbox and wcapp
 - Copy and paste the config.pro_64bit to:
 - D:\ptc\Workers\plm\CAD\ProE\WF4\worker1\config.pro
 - D:\ptc\Workers\plm\CAD\ProE\WF4\worker2\config.pro
 - D:\ptc\Workers\plm\CAD\ProE\WF4\worker3\config.pro
 - D:\ptc\Workers\plm\CAD\ProE\WF4\worker4\config.pro
 - D:\ptc\Workers\plm\CAD\ProE\WF4\worker5\config.pro

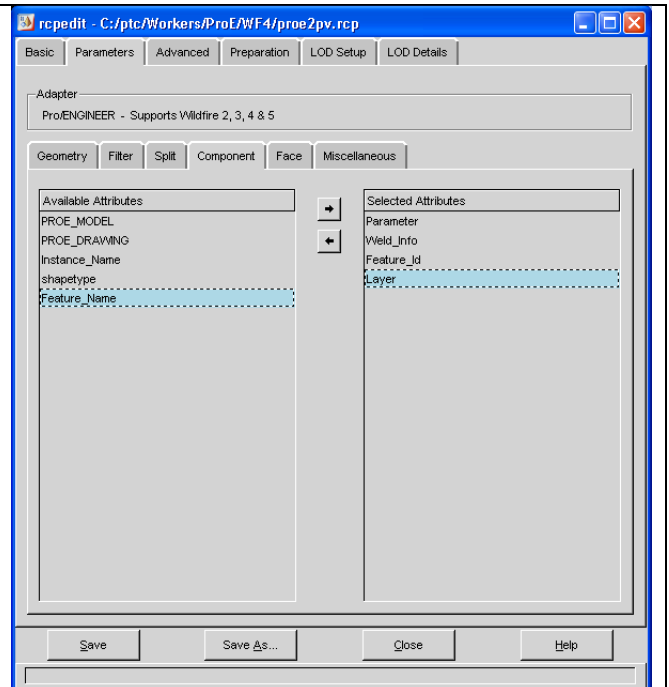
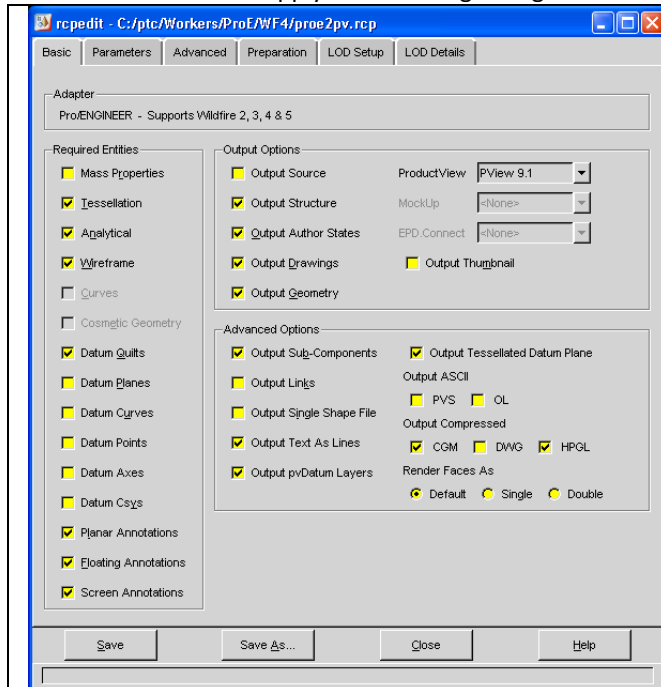
- D:\ptc\Workers\plm\CAD\ProE\WF4\worker6\config.pro
- Modify each config.pro trial directory path with respect to the worker trail directory:
! Specific for ProductView Multiple Workers
trail_dir D:\ptc\Workers\plm\CAD\ProE\WF4\worker1\trail
regen_backup_directory D:\ptc\Workers\plm\CAD\ProE\WF4\worker1\regen
- Copy the d:\ptc\CAD\ProE\WF4\bin\proe1.bat to proeWorker1Startplm.bat
- Modify the proeWorker1Startplm.bat to add the following lines respective to each worker's path:
@echo off
for /f "tokens=1,2" %%u in ('date /t') do set d=%%v
for /f "tokens=1" %%u in ('time /t') do set t=%%u
if "%t:~1,1%"=="." set t=0%%t%
set datestr=%d:~6,4%%d:~0,2%%d:~3,2%
set timestr=%t:~0,2%%t:~3,2%
set PTC_WF_ROOT=D:\ptc\Workers\plm\CAD\ProE\WF4\worker1\%datestr%%timestr%.wf
D:\ptc\CAD\ProE\WF4\bin\proe.exe D:\ptc\CAD\ProE\WF4\bin\proe1.psf %*
 - Repeat for all remaining workers.

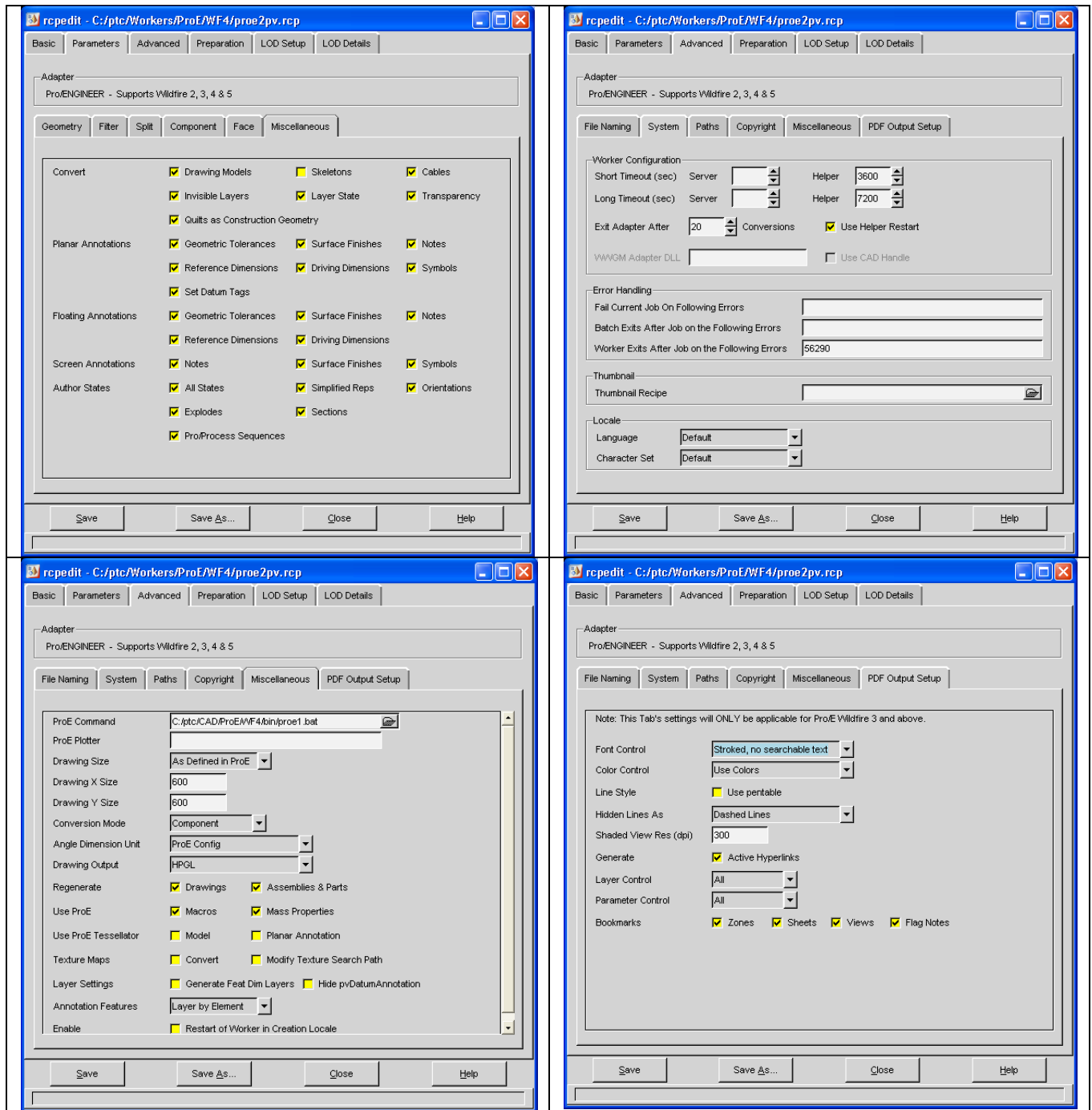
Generating the worker batch scripts with D:\ptc\productview_adapters\bin\proe2pv_config.exe
Use the following settings:

Client/Server Version: V9.1 or later
Setup Directory: D:\ptc\Workers\plm\CAD\ProE\WF4\worker1
Pro/ENGINEER Command: d:\ptc\CAD\ProE\WF4\bin\proeWorker1Startplm.bat
Pro/ENGINEER Version: Wildfire 4
Pro/ENGINEER Date-Code: M080 or later
All Components selected
Server Host: plm.camb.comdev.ca
Server Port: 5600

Select setup and exit

- Rename the D:\ptc\Workers\plm\CAD\ProE\WF4\worker1\protk.dat to D:\ptc\Workers\plm\CAD\ProE\WF4\worker1\protk_ootb.dat
- Open the D:\ptc\Workers\plm\CAD\ProE\WF4\worker1\proe2pv.rcp with the rcpedit.exe
- Apply the following configurations:





- Select Save and exit
-

Modify the newly generated file in D:\ptc\Workers\plm\CAD\ProE\WF4\worker#\proeworker.bat: to add **-DA plmworker#** in the last line

...
 "d:\ptc\productview_adapters\i486_nt\obj\workermonitor" -UH -s
 "d:\ptc\productview_adapters\i486_nt\obj\proe2pv" -DA plmworker1 -vt -r proe2pv.rcp -EW PROE -
 CSplm.camb.comdev.ca 5600 %*

Also in D:\ptc\Workers\plm\CAD\ProE\WF4\worker#, delete the generated protk.dat file. Remember to delete the protk.dat when generated every time you select setup in when in the UI for adapter.rcp or proe2pv_config.exe.

Configuring FTP Service:

Prerequisites:

- Have FTP component service installed which part of IIS.
- Proe local user created with a password that does not change
- Right click on Sites and add FTP Site.

