

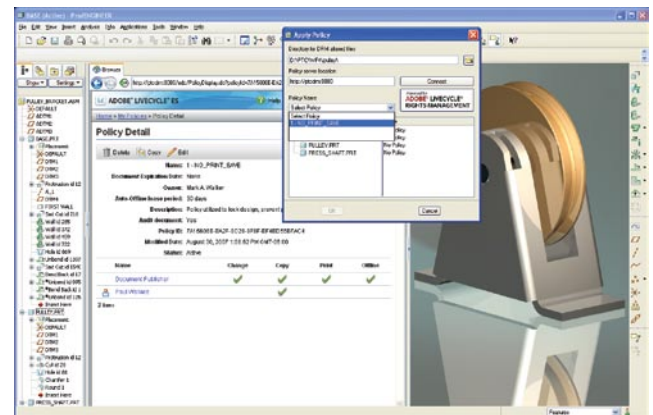
## Pro/ENGINEER® Rights Management Extension

PROTECT YOUR VALUABLE DESIGN IP PERSISTENTLY AND DYNAMICALLY

Outsourcing is growing and becoming a necessity in today's competitive global market. When you need to share your valuable CAD data internally or externally with design and manufacturing partners, you need added security on your files to persistently protect your intellectual property (IP) in case the data is removed from the secure PLM system. The Pro/ENGINEER Rights Management Extension (RMX) gives you robust file level protection and lets you share your design information with confidence—everywhere.

Product development teams often collaborate with external parties and share their design information to deliver products to market faster. An increasing amount of valuable information is captured in the CAD model (design geometry, annotations, tolerance ranges, performance requirements and optimizations) which increases the need to fully protect the CAD model. Traditional PLM systems and IT infrastructure provide robust security when the data is in the protected vault, but if the data is removed and shared with external parties via email or ftp, the risk of losing IP to competitors or other unauthorized viewers increases.

Outsourcing design and manufacturing also requires the ability to dynamically change access to the CAD data and other product design and manufacturing deliverables contained in Adobe PDF, Microsoft Word or Excel files that may have been removed from the secure PLM environment. Discrete manufacturers may need to remove access to design information upon project completion or termination of an employee or partnership. Version control of documents that have been distributed can also be enhanced. Access to outdated versions of CAD data that may have been removed from a managed PLM environment for production use can be immediately revoked. Enabling access to only the correct version of the product design and removing access to all other versions can save time and reduce manufacturing scrap costs.



Apply access policies directly from the Pro/ENGINEER user interface and embedded browser.

Pro/ENGINEER helps protect your valuable intellectual property with new, market leading digital rights management (DRM) capabilities. Powered by Adobe® LiveCycle® Rights Management ES, Pro/ENGINEER lets you secure access to your CAD data to help you improve your design and manufacturing outsourcing processes.

### Key Benefits

- Provides persistent and dynamic access control to Pro/ENGINEER part, assembly, and drawing files
- Precise control over file level data access rights such as file open, copy, save, print, online and offline access
- Instantly updates access rights to shared files as needs change for file version control or changes in partner/employee relationships
- Pro/ENGINEER data is secure everywhere, even outside physical firewalls and secure content management systems
- Robust design IP protection improves design and manufacturing outsourcing processes

# Persistent and Dynamic MCAD Digital Rights Management

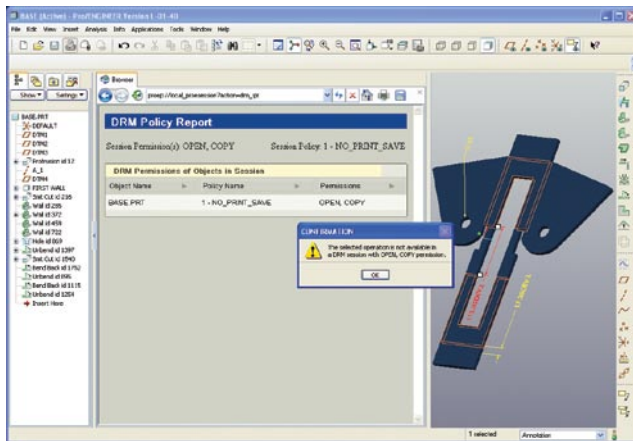
## Features and Specifications

### Protect Pro/ENGINEER CAD Data

- Initiate digital rights management capabilities directly from the Pro/ENGINEER user interface
- Control rights to Open, Copy, Save, and Print CAD files
- Enables online and offline access to CAD data
- Easily create timed-based DRM policies
- Access policies can be applied to Pro/ENGINEER
  - Parts
  - Assemblies
  - Drawings

### Create, Enforce, and Monitor Access Policies

- Leverages Adobe LiveCycle Right Management ES server software
- Centralized control of file level access rights, policies and users
- Set access policies from a web-browser anytime, anywhere
- Authenticates access rights to files each time the file is opened
- Track and monitor access activity
- Dynamically update access policies as needs change
  - Add and remove users anytime
  - Add and remove access rights and access policies
- Dynamically update access to Pro/ENGINEER objects as needs change
  - Revoke or modify access to specific file revisions
- Supports access rights for other document types including Adobe PDF, Microsoft Word and Excel (optionally available)



Pro/ENGINEER DRM policy reports show specific file and user access rights and alert dialogs notify users when non-authorized tasks are attempted.

### Language Support

English, German, French, and Japanese

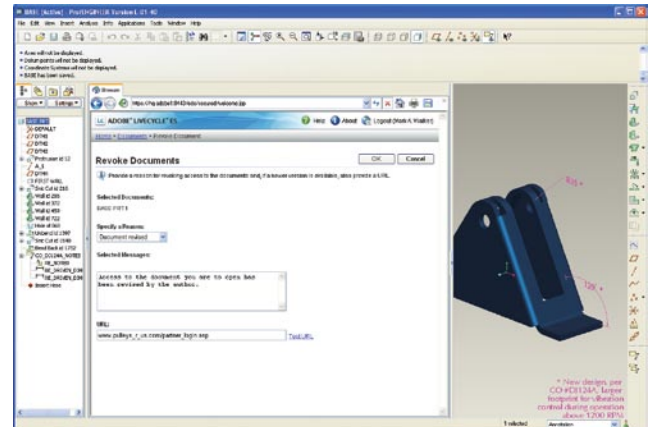
### Platform Requirements

Microsoft Windows (Vista and XP)

UNIX platforms (Solaris and HP-UX)

Adobe LiveCycle ES System Requirements

<http://www.adobe.com/products/livecycle/systemreqs.html>



Pro/ENGINEER lets you revoke access to outdated file versions and can automatically re-direct authorized viewers to the right version.

For the most up-to-date platform support information, please visit [www.ptc.com/partners/hardware/current/support.htm](http://www.ptc.com/partners/hardware/current/support.htm)

For more information on the Pro/ENGINEER Rights Management Extension, visit [www.ptc.com/go/proengineer/drm](http://www.ptc.com/go/proengineer/drm)

### The Pro/ENGINEER Advantage

Pro/ENGINEER is simple to learn and use, and is available in a variety of packages designed to meet your company's specific needs. Whether you need a cost-effective 3D CAD system that contains all the basic design capabilities or a comprehensive Product Development System that seamlessly connects your extended supply chain, you'll find exactly what you need in a single, fully scalable solution. Choose the package that fits your needs today. As your needs change and grow, you can easily upgrade to the package that is right for you tomorrow which leverages the same powerful platform—this means no data translation and a consistent user experience.

Pro/ENGINEER Rights Management Extension lets you protect your CAD design IP persistently and dynamically. As part of the Pro/ENGINEER family of integrated 3D CAD/CAM/CAE solutions, it delivers a distinct advantage for engineers and designers because Pro/ENGINEER is fully associative. That means any change made to the design is automatically reflected in all downstream deliverables—without any translation of model information. By eliminating data translation, you not only save time, but you also avoid the possibility of translation errors in your design. Pro/ENGINEER gives you everything you need you create and protect high quality, winning designs.

Copyright © 2007, Parametric Technology Corporation (PTC)—All rights reserved under copyright laws of the United States and other countries. PTC, the PTC Logo, Pro/ENGINEER, Wildfire, Windchill, Windchill PDMLink, Pro/INTRALINK, and all PTC product names and logos are trademarks or registered trademarks of PTC and/or its subsidiaries in the United States and in other countries. Windows is a registered trademark of Microsoft Corporation. Adobe and LiveCycle are registered trademarks of Adobe Systems Incorporated