

IoT Setting : Smart Warehouse

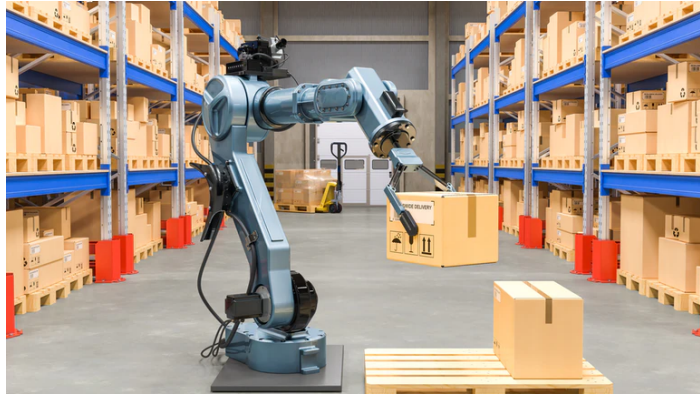
Imane KICHU | May 19, 2020

This IoT Setting demonstrate the example of a smart Warehouse Use Case. This Use Case illustrates the interactions between the following components:

- Collaborative Robot
- Control Dashboard
- Parcels and QR Code

Opportunities

- Increase productivity without affecting the quality
- Accelerate routine processes
- Better picking strategy
- Reduce costs and time



Cobots or collaborative robots

Semi autonomous robots connected to Dashboard to receive and execute orders. Sensors and Cameras to interact with external space and recognize the right path and right place to put products in.

Send Commands
Sends updates and Products Data

Collaborative Robot

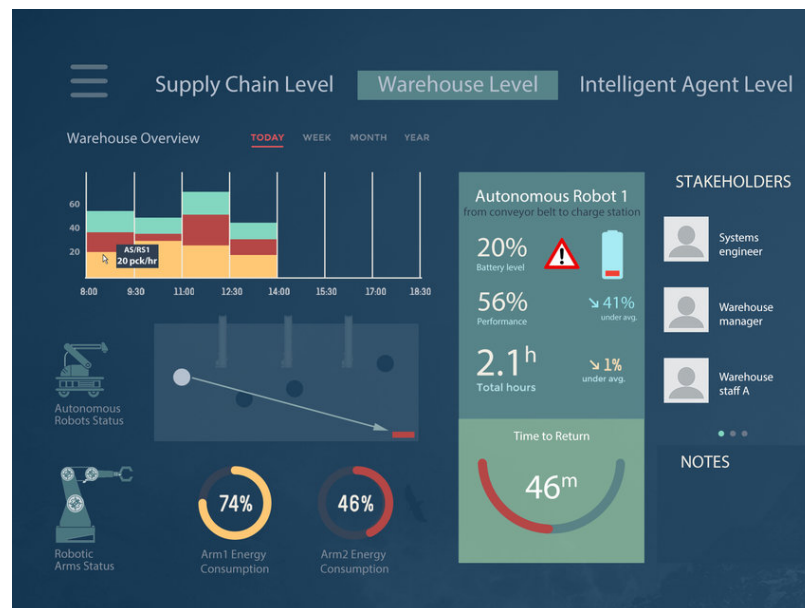
Move Product

Software system that sends commands and directions to the robots. It also receives updates, from the robots sensors and cameras, regarding the stock state, the shipped products and products that at still in the queue.

Products are identified by QR Code. The Robot integrated system is able to read QR Code and extract Product Informations. This data is sent to the Dashboard via the Robot's connectivity .



Control Dashboard



Products

QR Code