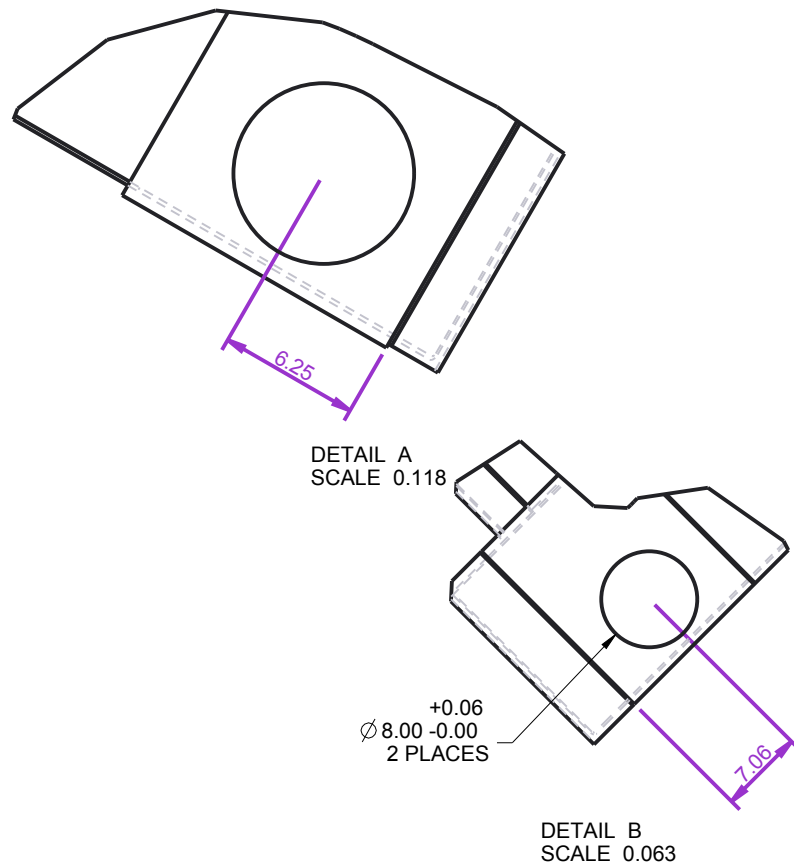
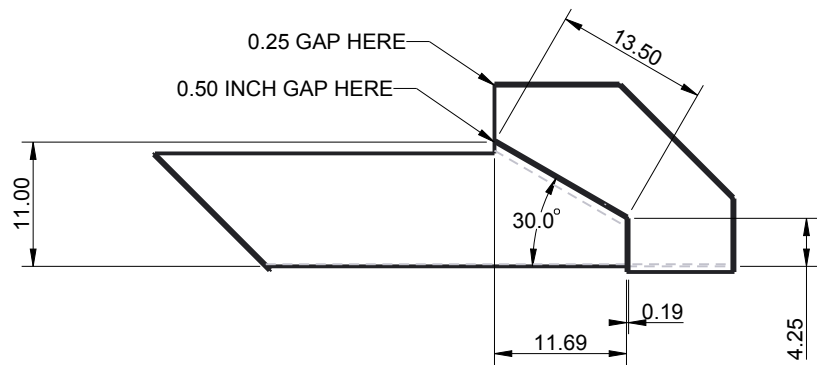


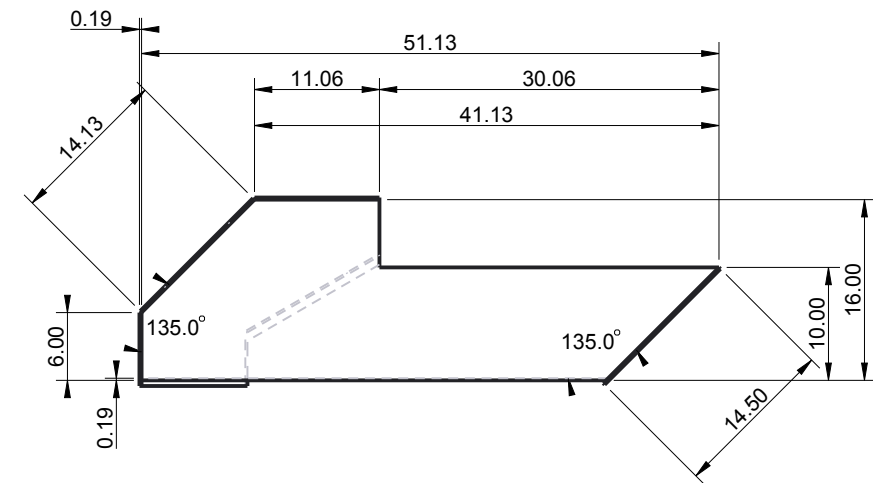
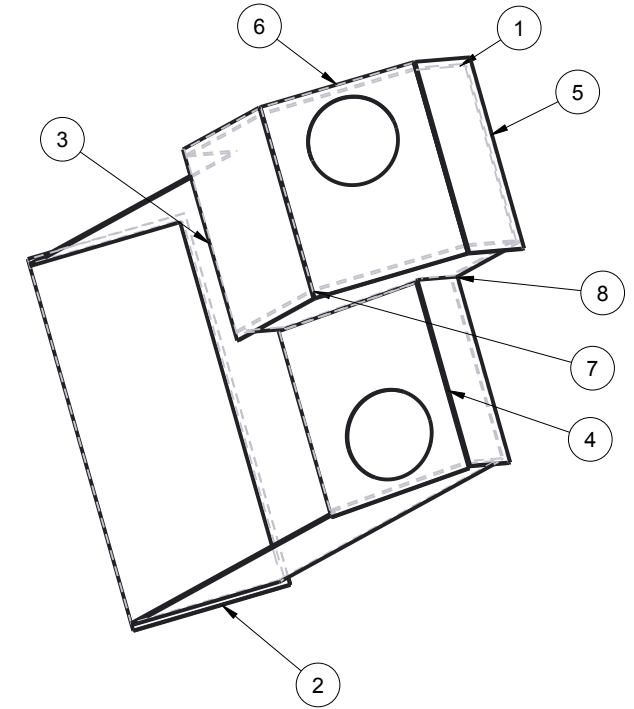
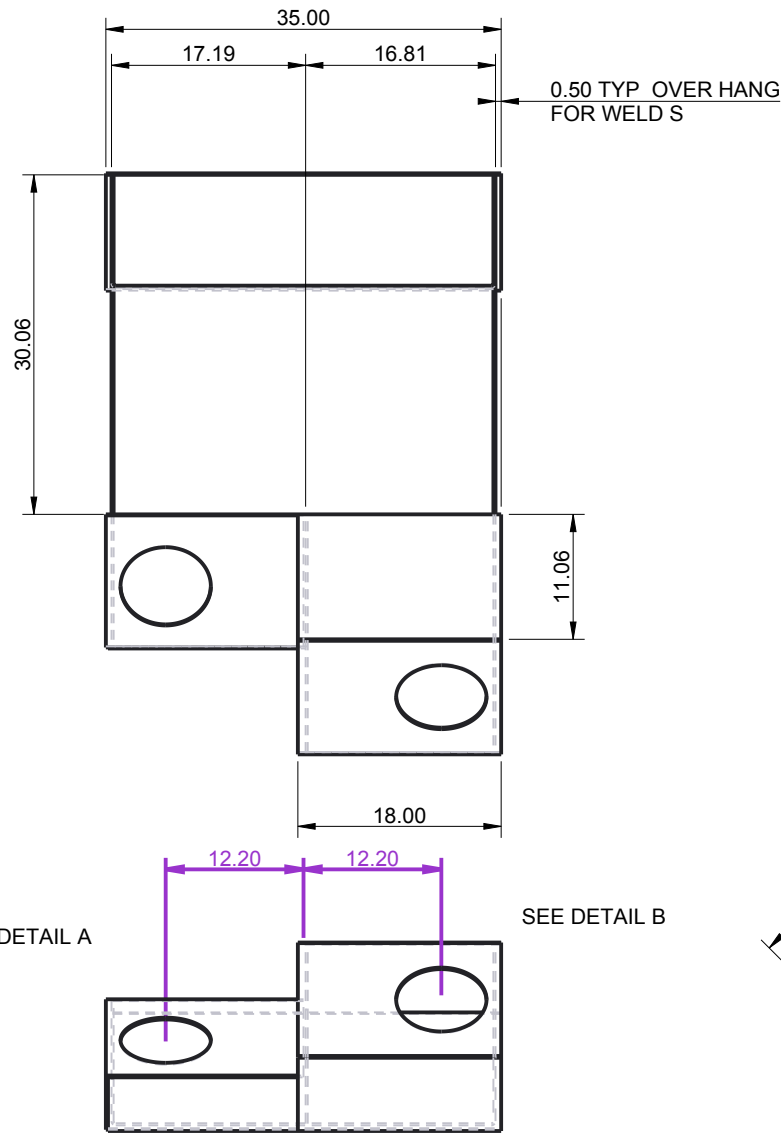
ITEM	QTY	CMNT	VENDOR PART NUMBER	DESCRIPTION	EXT DESCRIPTION	PART NUMBER / DESCRIPTION
500192-101	1	1		Raw Material, 350E Power Unit	PL 0.19 X 65.63 X 51.13 A36 (Per Drawing)	500192-101
500192-102	1	2		Raw Material, 800G Belly Pan	PL 0.19 X 14.50 X 35.00 A36	500192-102
500192-103	1	3		Raw Material, 800G Belly Pan	PL 0.19 X 11.06 X 18.00 A36	500192-103
500192-104	1	4		Raw Material, 800G Belly Pan	PL 0.19 X 13.50 X 17.50 A36	500192-104
500192-105	1	5		Raw Material, 800G Belly Pan	PL 0.19 X 6.50 X 18.00 A36	500192-105
500192-106	1	6		Raw Material, 800G Belly Pan	PL 0.19 X 14.13 X 18.00 A36	500192-106
500192-107	1	7		Raw Material, 800G Belly Pan	PL 0.19 X 16.50 X 21.6 A36	500192-107
500192-108	1	8		Raw Material, 800G Belly Pan	PL 0.19 X 4.75 X 17.50 A36	500192-108



I AM GOING TO HAVE AREALLY HARD TIME WELDING UP A HALF INCH GAP. THE 0.25 GAP ISN'T GOING TO BE ANY EASIER. PLESE COME PICK THIS UP AND FIX IT. I WILL CALL YOU IN THE AM.



Note:  
1.0 ALL WELDS 3/8 CONTINOUS AND WATER TIGHT



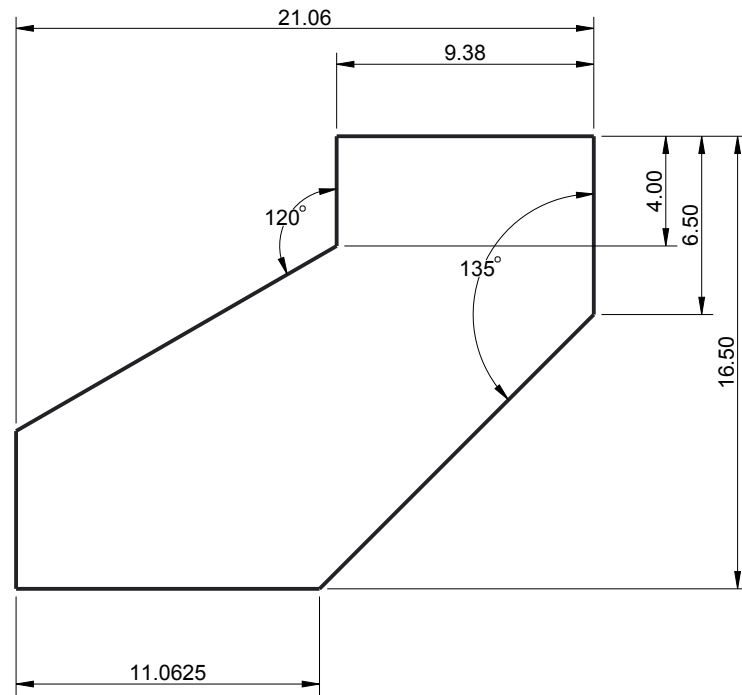
INTERNATIONAL  
CONSTRUCTION  
EQUIPMENT, INC.

The information contained is proprietary to I.C.E., Inc., and is not to be reproduced, communicated to a third person, or used in any manner whatsoever without the express written permission of I.C.E., Inc., or a duly authorized representative thereof.

Belly Pan		$\pm 0.02$
		$\pm 0.005$
		ANGLES:
		MODEL:
MATERIAL: A-36		PROJECTION METHOD:
EST. WEIGHT: 190.95	DRAWN: Clark	500192
MD: Douglas	0.059	
DATE: 25-12	1.0	

DATE	NAME	REVISION DESCRIPTION	REV
		INIITAL RELEASE	

ITEM	QTY	CMNT	VENDOR PART NUMBER	DESCRIPTION	EXT DESCRIPTION	PART NUMBER / DESCRIPTION
500192-101	1	1		Raw Material, 350E Power Unit	PL 0.19 X 65.63 X 51.13 A36 (Per Drawing)	500192-101
500192-102	1	2		Raw Material, 800G Belly Pan	PL 0.19 X 14.50 X 35.00 A36	500192-102
500192-103	1	3		Raw Material, 800G Belly Pan	PL 0.19 X 11.06 X 18.00 A36	500192-103
500192-104	1	4		Raw Material, 800G Belly Pan	PL 0.19 X 13.50 X 17.50 A36	500192-104
500192-105	1	5		Raw Material, 800G Belly Pan	PL 0.19 X 6.50 X 18.00 A36	500192-105
500192-106	1	6		Raw Material, 800G Belly Pan	PL 0.19 X 14.13 X 18.00 A36	500192-106
500192-107	1	7		Raw Material, 800G Belly Pan	PL 0.19 X 16.50 X 21.6 A36	500192-107
500192-108	1	8		Raw Material, 800G Belly Pan	PL 0.19 X 4.75 X 17.50 A36	500192-108



DATE	NAME	REVISION DESCRIPTION	REV
		INITIAL RELEASE	



**INTERNATIONAL  
CONSTRUCTION  
EQUIPMENT, INC.**

The information contained is proprietary to I.C.E., Inc., and is not to be reproduced, communicated to a third person, or used in any manner whatsoever without the express written permission of I.C.E., Inc., or a duly authorized representative thereof.

## Belly Pan

MATERIAL:	A-36	DRAWN BY:	WClark
EST. WEIGHT:	190.95	SCALE:	0.059
MODELED BY:	MDouglas	SHEET:	2 of 2
DATE:	Oct-25-12		

2PL DECIMAL:	±0.02
3PL DECIMAL:	±0.005
ANGLES:	±1
MODEL:	800G

PROJECTION METHOD:

# 500192