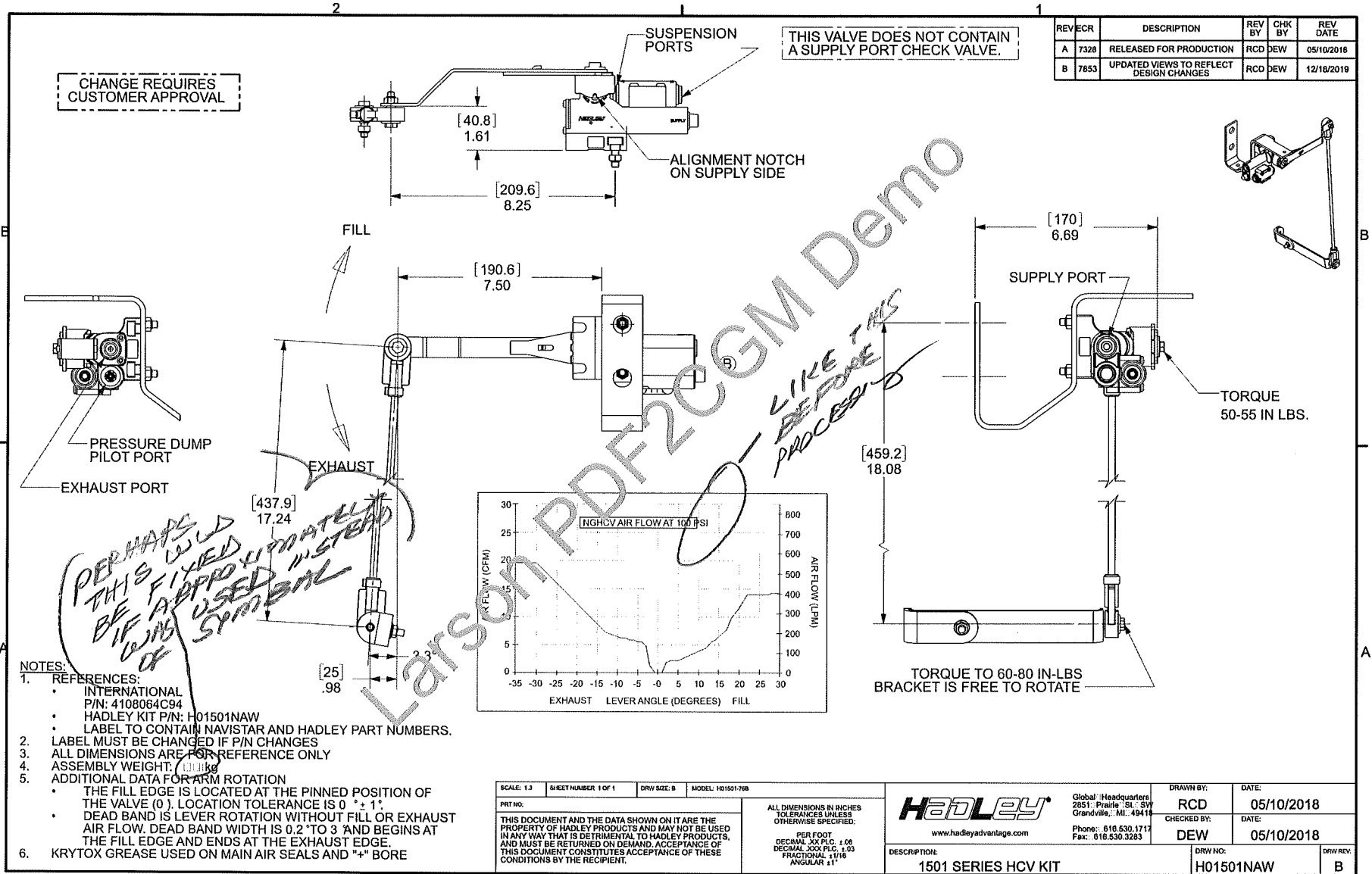


CGM THRU DWG THRU VIEW EXPRESS



CHANGE REQUIRES CUSTOMER APPROVAL

THIS VALVE DOES NOT CONTAIN A SUPPLY PORT CHECK VALVE.

REV	ECR	DESCRIPTION	REV BY	CHK BY	REV DATE
A	7328	RELEASED FOR PRODUCTION	RCD	DEW	05/10/2018
B	7853	UPDATED VIEWS TO REFLECT DESIGN CHANGES	RCD	DEW	12/18/2018

PRESSURE DUMP PILOT PORT
EXHAUST PORT

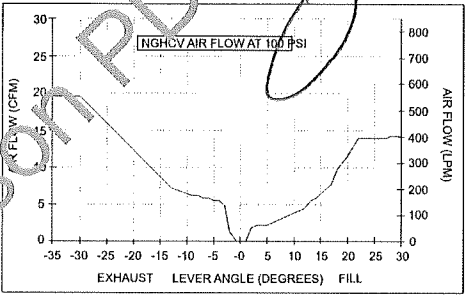
FILL

EXHAUST

SUPPLY PORT

TORQUE 50-55 IN LBS.

TORQUE TO 60-80 IN-LBS BRACKET IS FREE TO ROTATE



NOTES:

- REFERENCES:
 - INTERNATIONAL P/N: 4108064C94
 - HADLEY KIT P/N: H01501NAW
 - LABEL TO CONTAIN NAVISTAR AND HADLEY PART NUMBERS.
- LABEL MUST BE CHANGED IF P/N CHANGES
- ALL DIMENSIONS ARE FOR REFERENCE ONLY
- ASSEMBLY WEIGHT: 0.0000
- ADDITIONAL DATA FOR ARM ROTATION
 - THE FILL EDGE IS LOCATED AT THE PINNED POSITION OF THE VALVE (0). LOCATION TOLERANCE IS 0° ± 1°
 - DEAD BAND IS LEVER ROTATION WITHOUT FILL OR EXHAUST AIR FLOW. DEAD BAND WIDTH IS 0.2° TO 3° AND BEGINS AT THE FILL EDGE AND ENDS AT THE EXHAUST EDGE.
- KRYTOX GREASE USED ON MAIN AIR SEALS AND "+4" BORE

SCALE: 1:3 SHEET NUMBER 1 OF 1 DRW SIZE: B MODEL: H01501-768

THIS DOCUMENT AND THE DATA SHOWN ON IT ARE THE PROPERTY OF HADLEY PRODUCTS AND MAY NOT BE USED IN ANY WAY THAT IS DETRIMENTAL TO HADLEY PRODUCTS, AND MUST BE RETURNED ON DEMAND. ACCEPTANCE OF THIS DOCUMENT CONSTITUTES ACCEPTANCE OF THESE CONDITIONS BY THE RECIPIENT.

ALL DIMENSIONS IN INCHES TOLERANCES UNLESS OTHERWISE SPECIFIED:
PER FOOT
DECIMAL .XX PLC ± .08
DECIMAL .XXX PLC ± .03
FRACTIONAL 1/16
ANGULAR ± 1°



Global: Hadleyusform
2851 Prairie St. SW
Grandville, MI, 49418
Phone: 616.530.1717
Fax: 616.530.3283

DRAWN BY: RCD DATE: 05/10/2018
CHECKED BY: DEW DATE: 05/10/2018

DESCRIPTION: 1501 SERIES HCV KIT
DRW NO: H01501NAW
DRW REV: B

