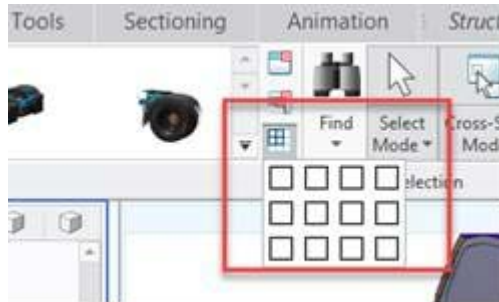
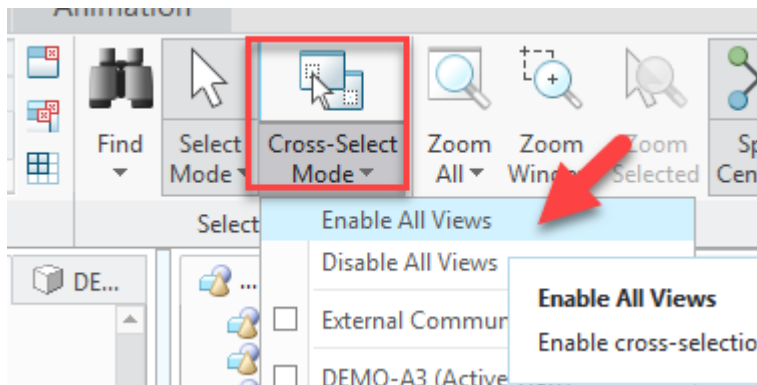


Workaround. How to find out which group the selected part belongs to

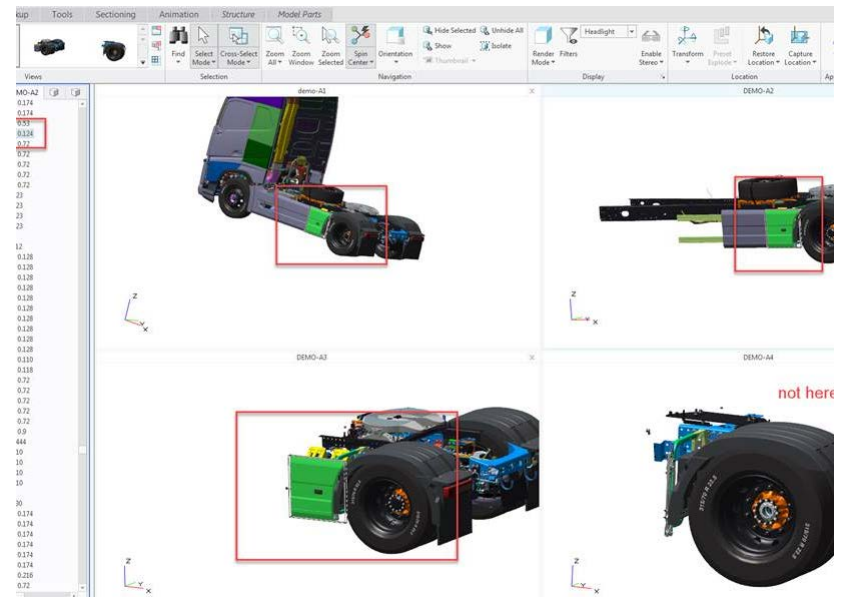
1- Open each group in a dedicated view and display them simultaneously.



2- Use the Cross-select-mode and choose “enable all views”.
(available with Creo View 4)

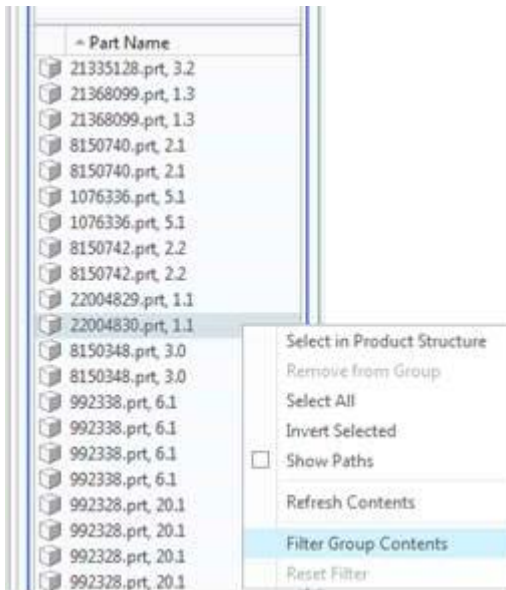


3- In the graphic window select the “wanted” item

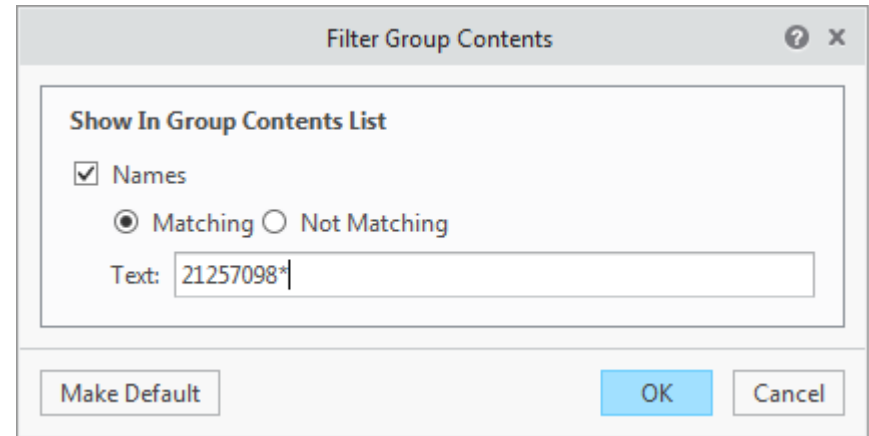


2- Use the Cross-select-mode and choose “enable all views”.
(available with Creo View 4)

5- Select a group in the middle panel. In the Part name panel right click and filter group contents



6- enter the n° of the part



7- then by a right click you can remove from group