

## OVERRIDING REPEAT REGION VALUES

**THE PROBLEM:** You have a BOM that is driven from an assembly that references engineering standards. The geometric representation of the part that you need to replace is close enough for the main assembly, so you do not need to replace the part in the assembly, but you do need to reference a Contract Engineering number in the BOM instead of an engineering standard.

**RESOLUTION:** The repeat region (BOM table) gets it's values typically from parameters in the part model or subassembly. This set of instructions will walk you through how to replace the part name without affecting the engineering standard. You can also apply these steps to the other parameters in the BOM (i.e. description, quantity...).

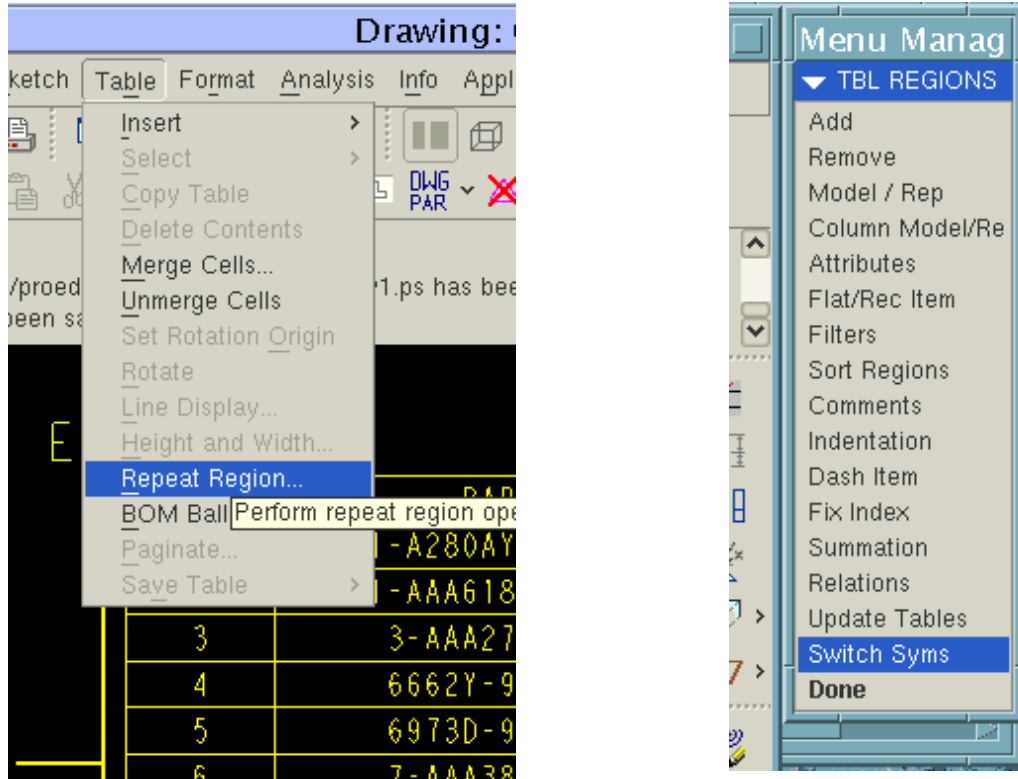
INDEX	PART	QUANTITY	DESCRIPTION	PACK CODE
1	1-A280AY997-45	1	THRESHOLD ASSY	
2	1-AAA6185AG997	1	TOE GUARD ASSY-FRONT	57
3	3-AAA272CDR1	2	ANGLE	
4	6662Y-920621	1	SOUND ISOLATION FRAME	20
5	6973D-920621	1	BYS PLATFORM ASSY.	
6	7-AAA386LSP1	2	PLATE	
7	AAA131LL1	8		
8	AAA255LQ3	10		
9	AAA255LQ4	10		
10	AAA310TP2	10		
11	AAA310TR3	12	ISOL-BLEV	
12	AAA320GC1	4	BUMPER	
13	AAA339PP1	4	RAIL CLIP	
14	DIN127B-M16-430HV-Z	4	WASHER	10
15	DIN434-M12-100HV-Z	4	WASHER, BEVEL	10
16	DIN434-M16-100HV-Z	4	WASHER, BEVEL	10
17	DIN6797J-M12-350HV-Z	8	INTERNAL TOOTHED LOCKWASHER	10
18	ISO4017M12X165-8.8Z	4	BOLT	10
19	ISO4017M12X20-8.8Z	20	BOLT	10
20	ISO4017M12X40-8.8Z	8	BOLT	10
21	ISO4017M12X64-8.8Z	10	BOLT	10
22	ISO4017M16X51-8.8Z	4	BOLT	10
23	ISO4032M12-8-Z	16	HEX NUT	10
24	ISO4032M16-8-Z	4	HEX NUT	10
25	ISO7089-M12-140HV-Z	34	FLAT WSR	10

In this example we will change these part numbers

In this example we will be modifying the above table the changes we will make are as follows:  
 Item 7 - change part # from AAA131LL1 to 1-AAA131LL1  
 Item 8 - change part # from AAA255LQ3 to 123-AAA255LQ3  
 Item 9 - change part # from AAA255LQ4 to \*\*\*ANYTHING I WANT\*\*\* (just to show that you can put anything in the place of the existing parameter)

# OVERRIDING REPEAT REGION VALUES

- 1) You need to switch the symbols of the repeat region so you can find out the parameter names you want to change. Select "Table" from the top menu and then select "Repeat Region". The menu manager will come up on the side, and then select "Switch Syms".



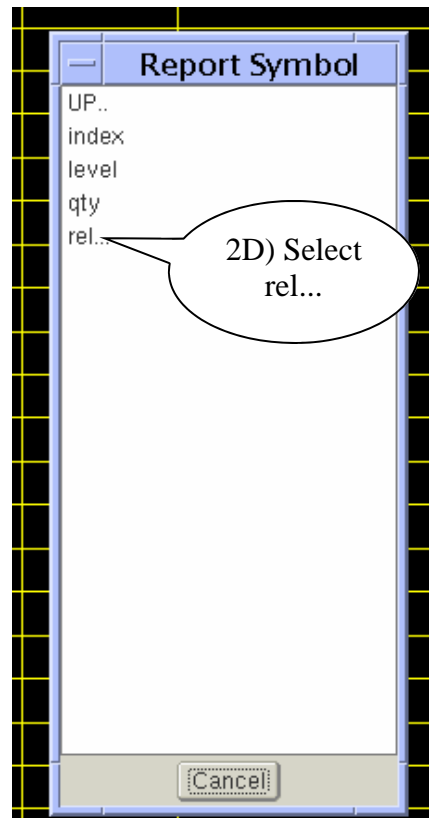
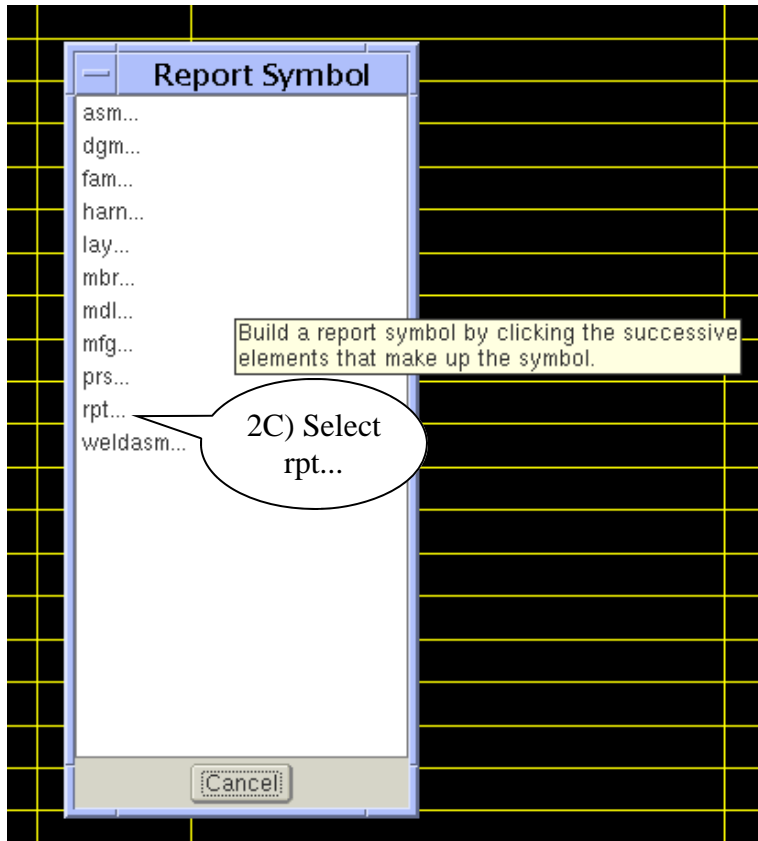
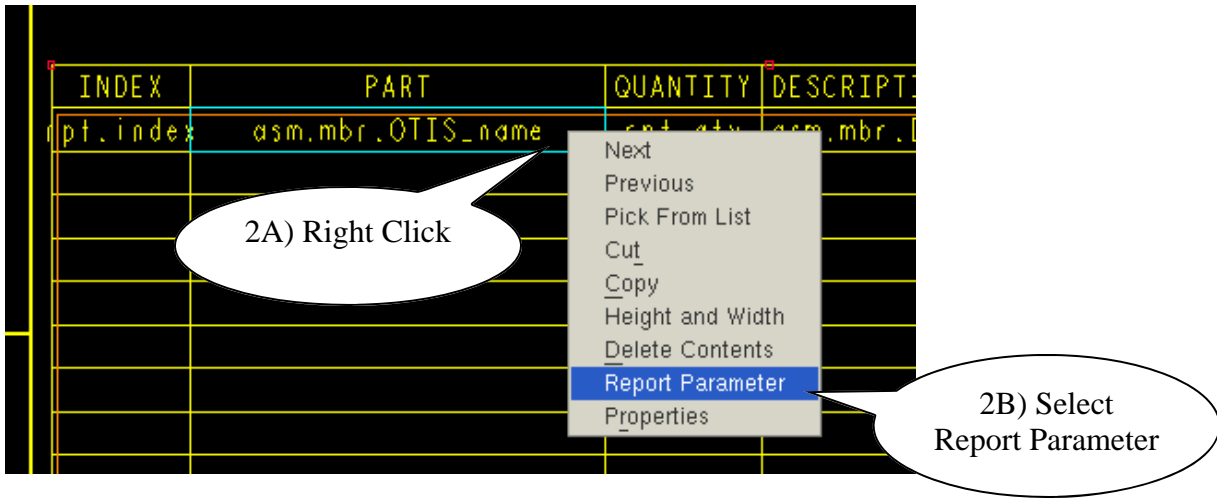
INDEX	PART	QUANTITY	DESCRIPTION	PACK CODE
rpt.index	asm.mbr.OTIS_name	rpt.qty	asm.mbr.DESCRPTION	asm.mbr.chess_parcel

Notice the name of the parameter.  
The actual parameter name is OTIS\_name; asm.mbr tells Pro/E where to find the parameter.

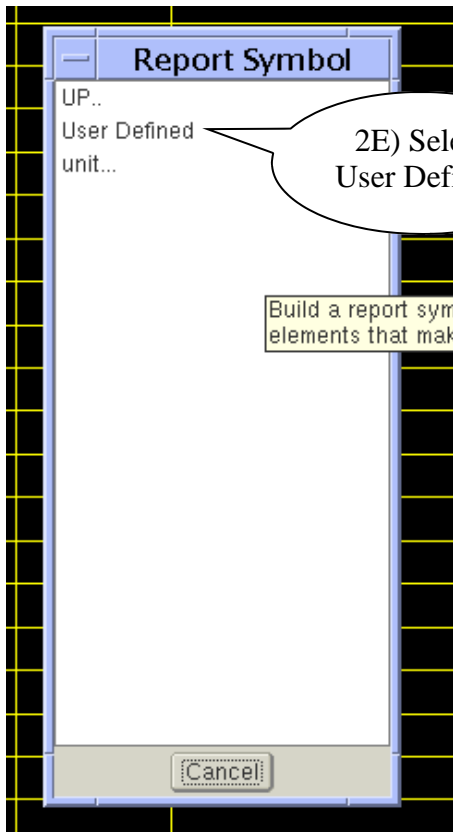
This is what the table looks like after you switch the symbols.

# OVERRIDING REPEAT REGION VALUES

- 2) In order to change the part name we have to create a new parameter; Select the cell that you want to change, right click (2A) and select “Report Parameter”(2B)- the “Report Symbol” window appears. Select rpt...(2C)> rel...(2D)> User Defined(2E)



# OVERRIDING REPEAT REGION VALUES



- 3) After you select User Defined the Report Symbol window goes away. Pro/E is now waiting for you to type in the name of the new parameter/symbol. To distinguish Contract Engineering parameters add ce\_ to the beginning of the parameter you are overriding.

NOTE: this may be at the bottom of your screen depending on your setup

• 6183CE-BYS\_ASSY has been saved.

➔ Enter symbol text: <CR>

➔ Enter symbol text: ce\_otis\_name|

Type in the new parameter/symbol name here. In this case we want to type ce\_otis\_name since the parameter we are replacing was otis\_name.

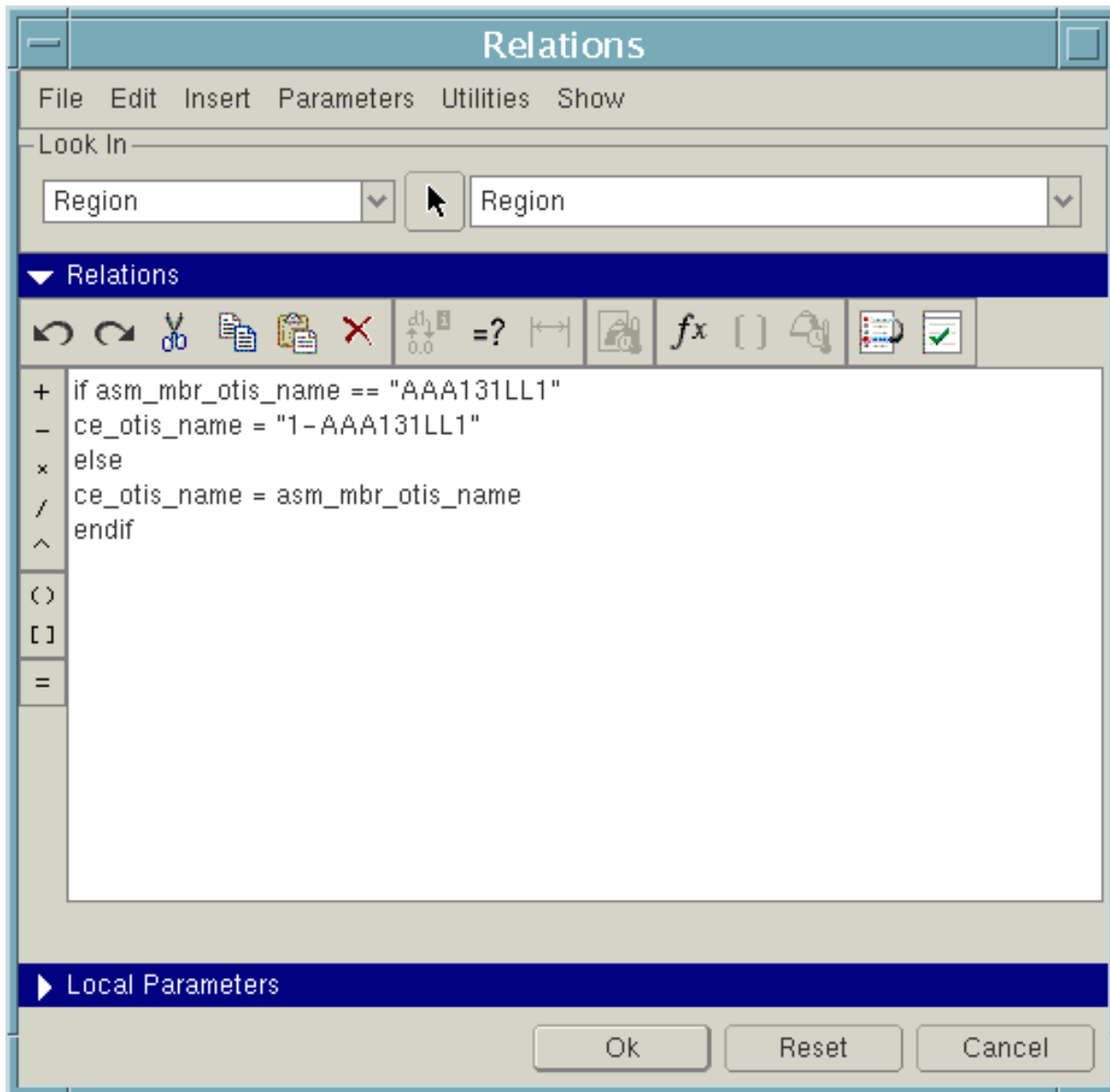
PART	QUANTITY
	rpt.qty





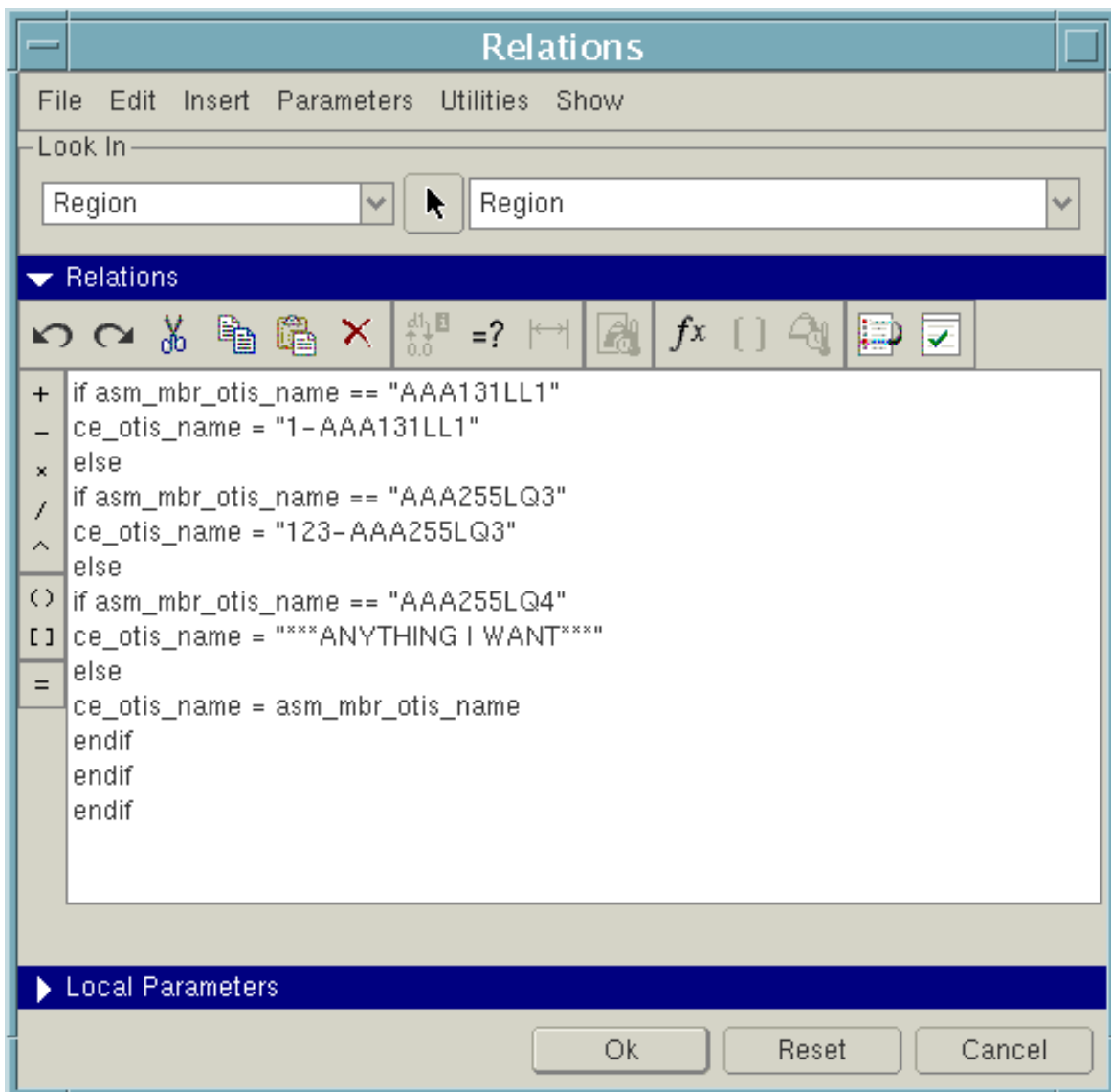
## OVERRIDING REPEAT REGION VALUES

- 6) The relations must be entered in exactly the same format as shown in the examples below. The parameters and their values will change from this example; but the overall format will stay the same.



## OVERRIDING REPEAT REGION VALUES

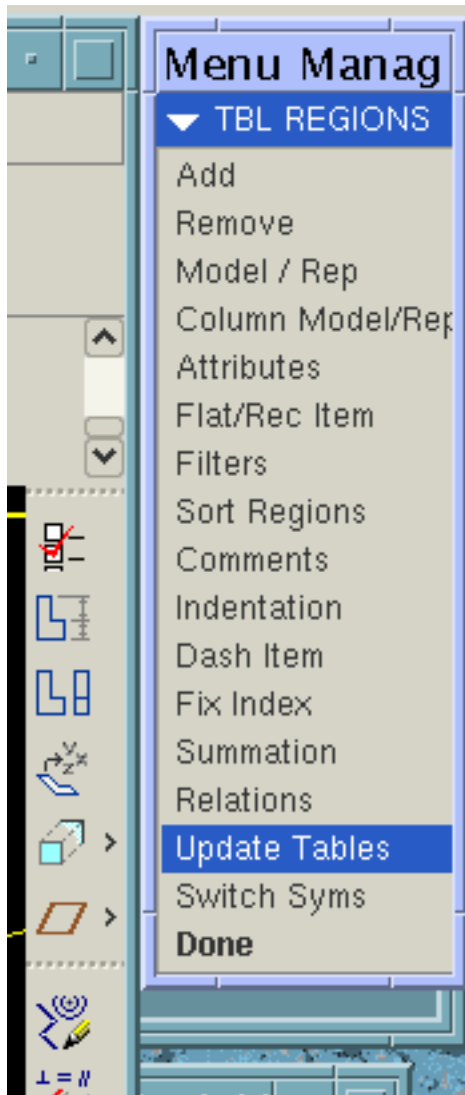
- 7) This shows what the relations will look like to change multiple part names. Notice that after each value is set there is an else before the next if, and for every if there is an endif at the end.





## OVERRIDING REPEAT REGION VALUES

- 8) After all the relations have been written close the window. If Pro/E finds any errors it will let you know, and you must correct them. After you have successfully created the relations select “Table” from the top menu and then select “Repeat Region”. First select “Switch Syms” as in step 1. After the symbols have switched back (and the values appear in the table) select “Update Tables” from the Menu Manager.



## OVERRIDING REPEAT REGION VALUES

- 10) The completed table in this example looks as follows.  
 This procedure can be applied for any of the parameters that are in a Repeat Region; For example if you wanted to change the description from the standard everywhere we used otis\_name in this procedure you would substitute DESCRIPTION.

INDEX	PART	QUANTITY	DESCRIPTION	PACK CODE
1	1-A280AY997-45	1	THRESHOLD ASSY	
2	1-AAA6185AG997	1	TOE GUARD ASSY-FRONT	57
3	3-AAA272CDRI	2	ANGLE	
4	6662Y-92062I	1	SOUND ISOLATION FRAME	20
5	6973D-92062I	1	BYS PLATFORM ASSY.	
6	7-AAA386LSP1	2	PLATE	
7	1-AAA131LL1	8	CUP WASHER	
8	123-AAA255LO3	10	SHIM	
9	***ANYTHING I WANT***	10	SHIM	
10	AAA310TP2	10	BLOCK, WOOD	
11	AAA310TR3	12	ISOL-BLOCK-RED	
12	AAA320GC1	4	BUMPER	
13	AAA339PP1	4	RAIL CLIP	
14	DIN127B-M16-430HV-Z	4	WASHER	10
15	DIN434-M12-100HV-Z	4	WASHER, BEVEL	10
16	DIN434-M16-100HV-Z	4	WASHER, BEVEL	10
17	DIN6797J-M12-350HV-Z	8	INTERNAL TOOTHED LOCKWASHER	10
18	ISO4017M12X165-8.8Z	4	BOLT	10
19	ISO4017M12X20-8.8Z	20	BOLT	10
20	ISO4017M12X40-8.8Z	8	BOLT	10
21	ISO4017M12X64-8.8Z	10	BOLT	10
22	ISO4017M16X51-8.8Z	4	BOLT	10
23	ISO4032M12-8-Z	16	HEX NUT	10
24	ISO4032M16-8-Z	4	HEX NUT	10
25	ISO7089-M12-140HV-Z	34	FLAT WSR	10